

COUNTY OF LOS ANGELES
DEPARTMENT OF AGRICULTURAL COMMISSIONER/WEIGHTS AND MEASURES

Asian Citrus Psyllid (*Diaphorina citri*)

Other common names: Citrus psylla, Oriental citrus psyllid, Asiatic citrus psyllid.

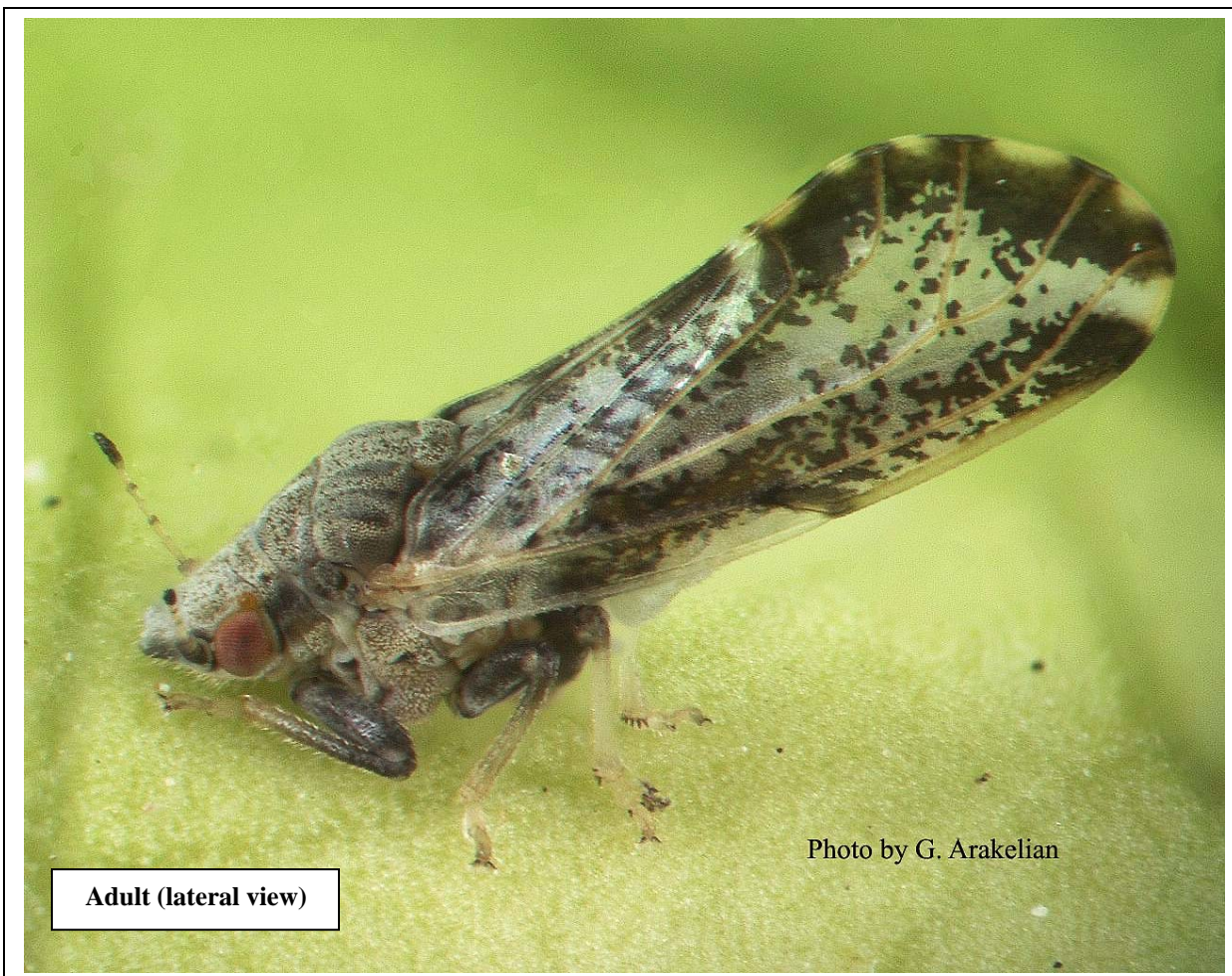
Distribution: Widely distributed from southeastern Asia to Iran. Found also in Saudi Arabia, on the islands of Reunion and Mauritius, in South and Central America, Mexico, and in the Caribbean Basin. Introduced into the U.S.: Alabama, Arizona, California, Florida, Georgia, Hawaii, Mississippi, South Carolina, Texas, and Louisiana.

Hosts and damage: Feeds on citrus, some closely related plants of the *Rutaceae* family, and fig (*Ficus carica*). Feeding may cause distortion of leaves and young shoots. Infested plant parts are often covered with wax and honeydew (upon which sooty molds grow) produced by nymphs. High populations are able to stunt the growth of young citrus trees. *D. citri* is a vector of the bacterium causing citrus greening disease or huanglongbing (“yellow dragon disease” in Chinese).

Field ID: Adults (about 3-4 mm) have grayish-tan bodies with brown markings and mottled brown wings. Last two segments of antennae are black. Feed with posterior parts of their bodies raised at 45° angle to the substrate. Jump or fly readily when approached.

Nymphs have yellow to brown oval bodies with well-developed wing pads. Pass through 5 instars.

Eggs: Yellow to orange color; almond-shaped.



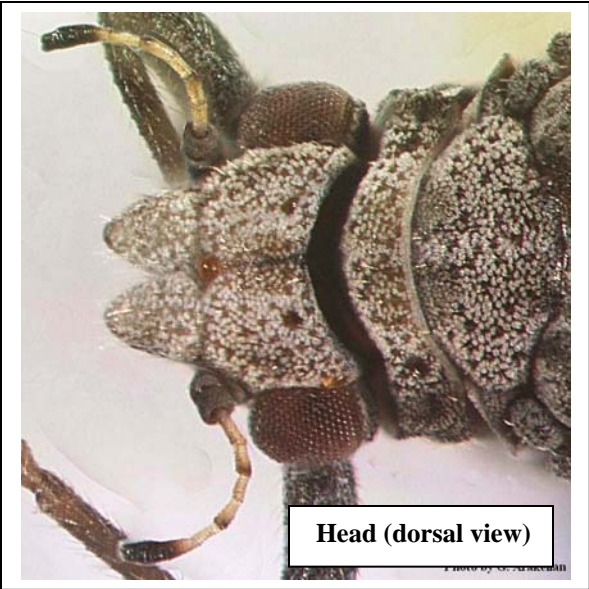
Adult (lateral view)

Photo by G. Arakelian

June, 2012



Adult (dorsal view)



Head (dorsal view)



Forewing



Female genitalia



Male genitalia