

Visual guide to register apiaries in California by using BeeWhere website.

Prepared by Riverside County, 5/2019

Steps to Follow:

1



<https://beewherecalifornia.com/>

Go to BeeWhere website.

2



Create an account or login to an existing account by clicking 'Register Here' link.

For the 2019 Bloom Season, Beekeepers can register through the following interfaces for **FREE**: (County registration fees still apply)

3



FieldWatch®

CalAgPermits

Register using the CalAgPermits link.

4



If you are a beekeeper, click 'Access Beekeeper Management'

Beekeepers

Beekeepers can use this website to fulfill their obligation to register annually in their home county, notify other counties when they first move bees into those counties, and notify the County Agricultural Commissioner when they move bees to new locations within the county.

All information provided by beekeepers through this site is carefully protected according to the provisions of California law.

[ACCESS BEEKEEPER MANAGEMENT](#)

Pest Control Advisors

Licensed Pest Control Advisors (PCAs) can use this website to find out if bee colonies will be present within one mile of the application site under consideration on or around the potential application date.

PCAs will not receive information about specific beekeepers or bee colony locations, nor will they receive contact information for beekeepers with colonies in the one-mile buffer zone.

[ACCESS PCA BEE CHECK](#)

Growers/Pesticide Applicators

Pesticide applicators (either a Grower applying pesticides on their own crops or a contracted Pest Control Business operating on behalf of a Grower) can use the BeeWhere web site to obtain contact information for beekeepers with colonies within a mile of an upcoming pesticide application.

The pesticide applicator will not receive any information about the specific locations of the bee colonies.

[ACCESS GROWER BEECHECK](#)

5

If you have already created an account, you can log in with your username and password.

If you have not created an account, you can click 'register new account'. When you register, you will be prompted for an email address and you will create your password. An email will be sent to your address to verify your account.

Account Login

It's easy to get started with BeeWhere. Logging in is the first step. Get more help by selecting the role that best fits you:

Beekeeper

Pest Control Advisor

Grower/Pesticide Applicator

LEARN ABOUT ACCOUNTS WITH MULTIPLE ROLES IN BEEWHERE

Username

Password

☐ Remember Me

[Forgot your password?](#)

Log in

Register New Account

6

Once you have verified your email address, you will be able to log in using your user name and password.

♦ If you **HAVE NOT** registered for 2019 with a County **in California**, you can register by pressing the 'register' link. You will be prompted for basic information and will be able to access a map where you can plot your locations.

♦ If you **HAVE** registered for 2019 with a County **in California**, you can request your Beewhere Beekeeper ID from the county in which you registered: the ID is a unique code [B-##-2019-#####] and is necessary to link your account (the email address you provided) with your existing registration (which was input by County personnel).

Once you have obtained your Beewhere Beekeeper ID, you can click 'Add my ... ID' link.

A window will pop up where you can enter your Beekeeper ID and press 'Submit Request'

Your request will have to be reviewed and approved before you can access the next functions.

Haven't registered in California for 2019?

If you have not yet registered in California for 2019 and received a BeeWhere Beekeeper ID, you can complete your initial registration using the button provided below. Your initial registration should be completed in your home county (your main business or apiary location), or in the county where your bees will first be placed in California. You will be assigned a BeeWhere Beekeeper ID which will remain the same for all other county registrations and future years.

Payment of the required \$10 fee to your home county must be made by mail or in person at the local county office. Once this payment has been processed, additional features will be made available to you on this website. [A list of County Agricultural Commissioners offices is available here.](#)

REGISTER

Already registered in California for 2019?

If you already registered for 2019, we just need to get you set up with a BeeWhere Beekeeper ID. You have three options to get this done:

- **Option 1:** do nothing - your local County Agricultural Commissioner staff will set up your BeeWhere Beekeeper ID for you and connect it to your beewhere.calagpermits.com login. Once this process is complete you'll receive an email and you can start using the features of BeeWhere to manage your registrations and notifications.
- **Option 2:** click on the Register button above and complete your BeeWhere registration. Your local County Agricultural Commissioner staff will be notified that you completed your BeeWhere registration online and they will update your payment status to enable the full set of BeeWhere features for you.
- **Option 3:** if your local Agricultural Commissioner staff have already sent you a communication with your BeeWhere Beekeeper ID but it is not yet connected to your beewhere.calagpermits.com login, you can enter your BeeWhere Beekeeper ID using the button below and once it is verified you will have access to all the BeeWhere features.

ADD MY BEEWHERE BEEKEEPER ID

Please enter your existing State Beekeeper ID

Submit Request

Cancel

For immediate assistance, call: (951) 212-8005

After you enter your basic information, you will be able to plot the locations of your bees.

Your apiary locations are kept confidential,

only you and authorized personnel will have access to the maps.

When a grower uses BeeWhere to inquire about colonies within a mile of their pesticide application, only the contact information populates: NOT the apiary location(s), or distance from the application site.

Pesticide notification is optional. There is also an option to receive the notification anonymously—the grower will send the notification to a generated email address which will be linked to your email address.

Name: Rivco agcomm

State Beekeeper ID: B-33-2019-00006

UPDATE INFORMATION

REVIEW ACTIVITY LOG

Registered Counties:

REGISTER IN NEW COUNTY

County	Year	Status
Riverside	2019	UNPAID

1

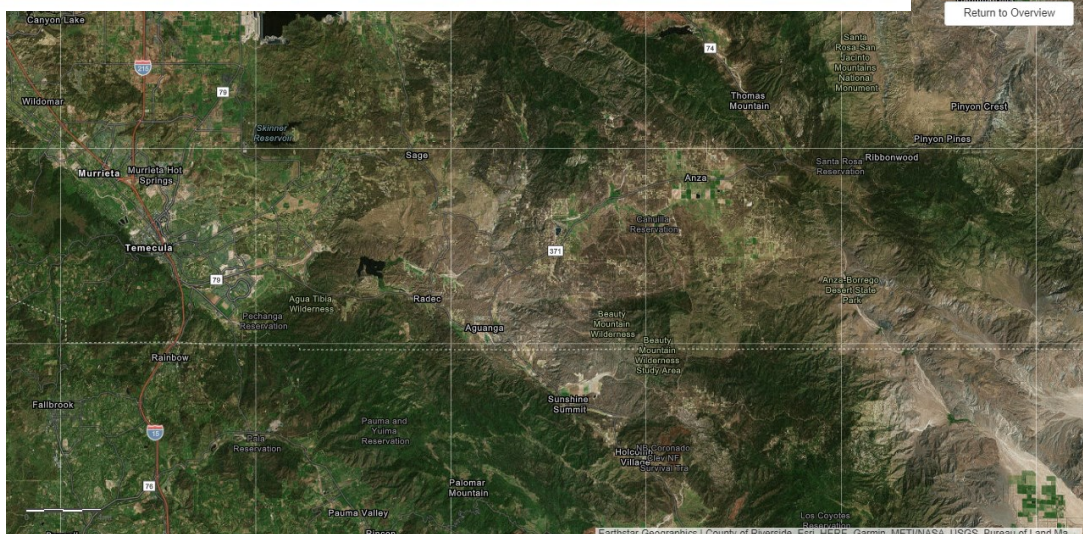
20

items per page

1 - 1 of 1 items

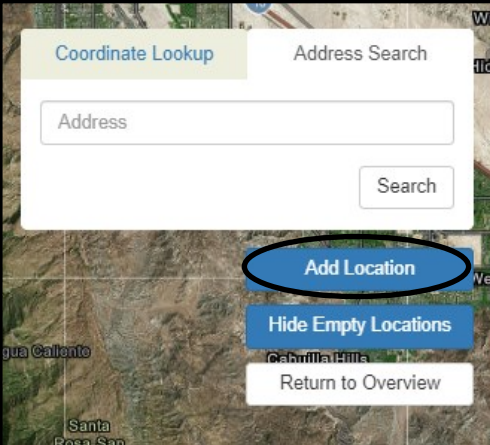
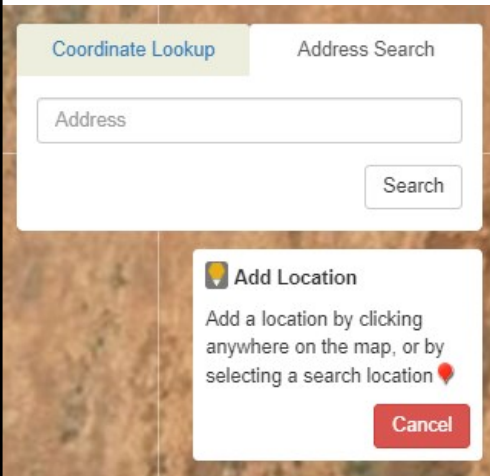
Hive Locations:

MANAGE LOCATIONS



You will have access to an 'overview' page.

Here you can update your information, register in the counties you are active in, and manage your apiary locations.

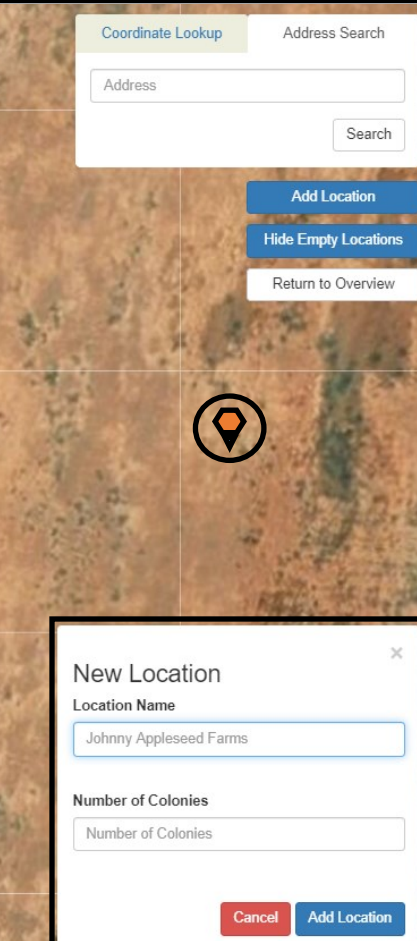
Once you are in the location management map, you will be able to scroll freely and pinpoint the exact location where your apiaries are located.

First, when you have found the area where your apiary is located, click 'Add Location'

Then, using the mouse cursor, click the location where the apiary is located.

Once you have clicked the location, a hexagon will appear with an arrow pointing to the apiary location. A pop-up will also generate. In the pop-up you can name the location (this is for your purposes) and identify how many colonies are present at that location.

After you have entered a name and number, you can click 'add location' to save it on the map.



Once you have input your locations, they will populate on the 'overview' map.

Hive Locations:

