

RIVERSIDE COUNTY  
2008  
AGRICULTURAL PRODUCTION REPORT





### 2008 Special Focus: Water Crisis

This year's cover highlights concerns about the worsening water crisis in California and Riverside County. A portion of the Avocado grove pictured on the cover has been "stumped" to conserve water for other trees in the orchard or other orchards. Stumping involves severely cutting back the branches so that only the main trunk and the roots are left. The "stumped" tree will still survive and thereby use less water, but it will not produce fruit again until the tree is allowed to re-grow foliage. Stumping allows a farmer to reduce watering for a few years until enough water is available to again fully irrigate the orchard. When regular watering is provided to the tree again, it will sprout new branches and produce fruit sooner than if the tree were removed, replanted, and allowed to grow again.

While Riverside County and most of California is in its third year of below normal rainfall, the county has actually been below normal precipitation for eight of the last ten years, as depicted in the graphs on page 22 of this report. As the availability of water becomes more and more critical, farmers may have to decide what crops are planted, which crops get irrigated, or how many acres of land remain fallow.

The graphs and pictures on pages 22 to 26 depict the historical rainfall in the county and various techniques that growers have implemented to conserve water by improving irrigation efficiency. Flood and furrow irrigation tactics have largely been replaced by drip irrigation and micro sprinklers. Also included is a sampling of headline news articles concerning the water crisis in the county and throughout the state. It is our hope that the reader of this report will become more aware of the water issues facing agriculture and the efforts being made by growers to conserve and use this important natural resource.



## AGRICULTURAL COMMISSIONER'S OFFICE

4080 LEMON STREET, ROOM 19  
P.O. BOX 1089  
RIVERSIDE, CA 92502-1089  
PHONE (951) 955-3000  
FAX (951) 955-3012  
www.rivcoag.org

## WEIGHTS & MEASURES DIVISION

2950 WASHINGTON STREET  
P.O. BOX 1480  
RIVERSIDE, CA 92502-1480  
PHONE (951) 955-3030  
FAX (951) 276-4728

### JOHN SNYDER

Agricultural Commissioner  
Sealer of Weights & Measures

A.G. Kawamura, Secretary  
California Department of Food and Agriculture  
And

The Honorable Board of Supervisors of Riverside County  
Jeff Stone, Chairman, District III

Bob Buster, District I  
John Tavaglione, District II

Roy Wilson, District IV  
Marion Ashley, District V

I am pleased to submit the 2008 Agricultural Production Report for the acreage, yield, and gross valuation of agricultural crops and livestock in Riverside County.

This year's Agricultural Production Report represents a total gross valuation of \$1,268,589,900, which is an increase of \$3.5 Million (0.3%) from the 2007 revised gross value. It also represents a new record, surpassing the previous value of 1,265,063,200 set in 2007. The gross value for **Agricultural Crops** was \$947,529,000, an increase of \$21.4 Million (2.3%) from the previous year. The gross value of **Livestock and Poultry** production was \$321,060,900, a decrease of \$17.9 Million (5.3%) from the 2007 value.

For the sixth year in a row, **Nursery Stock** ranked as the top valued crop in the county even though **Nursery** production values decreased \$41.9 Million (15.4%) from last year to 230.4 Million, while **Milk** production values decreased \$32.1 Million (14.6%) to 187.6 Million to remain in second place. Rounding out the top five crops in the County, **Egg** values increased 19.9 Million (21.9%) to \$110.6 Million, **Table Grapes** decreased \$11.8 Million (11.3%) to \$92.8 Million and **Hay** values increased 18.7 Million (26.9%) to 88.1 Million.

Despite many crops having double digit percentage gains or losses in value and the continuing drought, overall production values in the County set a new all time high, primarily on the strength of strong prices for Eggs, Lemons, Bell Peppers and Hay. The declining economy had an adverse impact on Nursery Stock values and reduced yields adversely affected Milk and Table Grape values. Despite ever changing economic, cultural, and market driven challenges, agriculture in Riverside County remains resilient, diverse, and viable.

It must be emphasized that this report reflects a gross return only and in no way represents a measure of profit or loss to producers. Leading agricultural economists agree that every dollar received by agriculturalists in Riverside County in 2008, has the financial impact of three and a half times that amount. Therefore, the total value of \$1,268,589,900 represents a financial impact of more than \$4,440,064,650 into the local and regional economy.

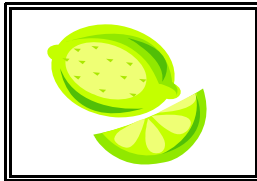
I wish to express my sincere appreciation to the producers, processors, and agencies that have generously provided the information necessary for the compilation of this report. I would also like to sincerely thank and recognize all of the members of my staff for their contributions toward the preparation of this report, with particular thanks and gratitude to Deputy Agricultural Commissioner/Sealer Bill Oesterlein for his leadership of this annual endeavor.

Respectfully submitted,

John Snyder  
Agricultural Commissioner  
Sealer of Weights & Measures

## TABLE OF CONTENTS - 2008

CITRUS CROPS	1
TREE AND VINE CROPS	2
VEGETABLE, MELON AND MISCELLANEOUS CROPS	3-4
FIELD AND SEED CROPS	5-6
LIVESTOCK AND POULTRY	7
LIVESTOCK AND POULTRY PRODUCTS	7
AQUACULTURE	7
NURSERY STOCK PRODUCTION	8
APICULTURE	8
SUMMARIES –DISTRICT VALUATIONS, ACREAGE STATISTICS, TOTAL VALUES	9
PRODUCTION VALUES CHANGES 2007 TO 2008	10-11
AGRICULTURAL PRODUCTION VALUATION 2004-2008	12
MAJOR CROP TRENDS 1999-2008	13
RIVERSIDE COUNTY LEADING AGRICULTURAL VALUATIONS	14
CALIFORNIA’S LEADING AGRICULTURAL COUNTIES	14
COUNTY AGRICULTURAL PRODUCTION VALUES 1994-2008	15
MILLION DOLLAR COMMODITIES	16
PHYTOSANITARY EXPORT CERTIFICATION SUMMARY	17-18
SUSTAINABLE AGRICULTURE REPORTS	19-21
SPECIAL FOCUS: WATER CRISIS	22-26
STAFF MEMBERS	27



## CITRUS CROPS

	Year	Planted Acreage	Harvested Acreage	Production		Value		
				Per Acre	Total	Unit	Per Unit	Total
<b>Grapefruit-Red</b>	<b>2008</b>	<b>3,180</b>	<b>3,180</b>	<b>968</b>	<b>3,078,240</b>	<b>34 lbs</b>	<b>6.09</b>	<b>18,746,500</b>
<b>By-Products</b>	<b>2008</b>			<b>138</b>	<b>438,840</b>		<b>0.71</b>	<b>311,600</b>
Grapefruit-Red	2007	4,028	3,998	923	3,690,154	34 lbs	7.20	26,569,100
By-Products	2007			178	711,644		0.42	298,900
<b>Grapefruit-Ruby</b>	<b>2008</b>	<b>1,937</b>	<b>1,851</b>	<b>924</b>	<b>1,710,324</b>	<b>34 lbs</b>	<b>7.38</b>	<b>12,622,200</b>
<b>By-Products</b>	<b>2008</b>			<b>183</b>	<b>338,733</b>		<b>0.93</b>	<b>315,000</b>
Grapefruit-Ruby	2007	1,979	1,979	888	1,757,352	34 lbs	7.61	13,373,400
By-Products	2007			191	377,989		0.83	313,700
<b>Grapefruit-Other*</b>	<b>2008</b>	<b>281</b>	<b>281</b>	<b>537</b>	<b>150,897</b>	<b>34 lbs</b>	<b>7.85</b>	<b>1,184,500</b>
<b>By-Products</b>	<b>2008</b>			<b>129</b>	<b>36,249</b>		<b>0.60</b>	<b>21,700</b>
Grapefruit-Other*	2007	530	530	417	221,010	34 lbs	8.35	1,845,400
By-Products	2007			196	103,880		0.24	24,900
<b>Lemons</b>	<b>2008</b>	<b>5,814</b>	<b>5,747</b>	<b>664</b>	<b>3,816,008</b>	<b>38 lbs</b>	<b>17.61</b>	<b>67,199,900</b>
<b>By-Products</b>	<b>2008</b>			<b>116</b>	<b>666,652</b>		<b>1.39</b>	<b>926,600</b>
Lemons	2007	6,413	6,073	322	1,955,506	38 lbs	18.30	35,785,800
By-Products	2007			57	346,161		1.10	380,800
<b>Miscellaneous**</b>	<b>2008</b>	<b>67</b>	<b>67</b>	<b>6.79</b>	<b>455</b>	<b>tons</b>	<b>942.00</b>	<b>428,500</b>
Miscellaneous**	2007	64	64	6.14	393	tons	450.00	176,800
<b>Oranges-Navel</b>	<b>2008</b>	<b>1,453</b>	<b>1,323</b>	<b>476</b>	<b>629,748</b>	<b>37.5 lbs</b>	<b>11.58</b>	<b>7,292,500</b>
<b>By-Products</b>	<b>2008</b>			<b>147</b>	<b>194,481</b>		<b>0.94</b>	<b>182,800</b>
Oranges-Navel	2007	1,394	1,394	480	669,120	37.5 lbs	18.72	12,525,900
By-Products	2007			187	260,678		1.42	370,200
<b>Oranges-Valencia</b>	<b>2008</b>	<b>2,411</b>	<b>2,360</b>	<b>307</b>	<b>724,520</b>	<b>37.5 lbs</b>	<b>11.49</b>	<b>8,324,700</b>
<b>By-Products</b>	<b>2008</b>			<b>283</b>	<b>667,880</b>		<b>3.34</b>	<b>2,230,700</b>
Oranges-Valencia	2007	2,477	2,435	207	504,045	37.5 lbs	16.15	8,140,300
By-Products	2007			201	489,435		2.62	1,282,300
<b>Royal Mandarins</b>	<b>2008</b>	<b>56</b>	<b>56</b>	<b>401</b>	<b>22,456</b>	<b>37.5 lbs</b>	<b>10.49</b>	<b>235,600</b>
<b>By-Products</b>	<b>2008</b>			<b>90</b>	<b>5,040</b>		<b>2.15</b>	<b>10,800</b>
Royal Mandarins	2007	42	42	197	8,274	37.5 lbs	8.35	69,100
By-Products	2007			277	11,634		1.29	15,000
<b>Tangelos</b>	<b>2008</b>	<b>418</b>	<b>401</b>	<b>420</b>	<b>168,420</b>	<b>30 lbs</b>	<b>9.85</b>	<b>1,658,900</b>
<b>By-Products</b>	<b>2008</b>			<b>99</b>	<b>39,699</b>		<b>2.02</b>	<b>80,200</b>
Tangelos	2007	601	597	424	253,128	30 lbs	17.15	4,341,100
By-Products	2007			101	60,297		1.20	72,400
<b>Tangerines</b>	<b>2008</b>	<b>2,074</b>	<b>1,960</b>	<b>562</b>	<b>1,101,520</b>	<b>25 lbs</b>	<b>12.40</b>	<b>13,658,800</b>
<b>By-Products</b>	<b>2008</b>			<b>134</b>	<b>262,640</b>		<b>1.25</b>	<b>328,300</b>
Tangerines	2007	1,873	1,760	637	1,121,120	25 lbs	13.72	15,381,800
By-Products	2007			191	336,160		1.25	420,200
<b>TOTAL</b>	<b>2008</b>	<b>17,691</b>	<b>17,226</b>					<b>135,759,800</b>
	2007	19,401	18,872					121,387,100

\* Includes: White, Star.

\*\* Includes: Oranges (Blood), Kumquats, Limes.



## TREE AND VINE CROPS

	Year	Planted Acreage	Harvested Acreage	Production			Value	
				Per Acre	Total	Unit	Per Unit	Total
<b>Apples</b>	<b>2008</b>	<b>32</b>	<b>32</b>	<b>75</b>	<b>2,400</b>	<b>40 lbs</b>	<b>10.00</b>	<b>24,000</b>
	2007	50	0	No Harvest due to frost				-
<b>Apricots</b>	<b>2008</b>	<b>14</b>	<b>14</b>	<b>250</b>	<b>3,500</b>	<b>20 lbs</b>	<b>11.00</b>	<b>38,500</b>
	2007			Miscellaneous				-
<b>Avocados</b>	<b>2008</b>	<b>8,036</b>	<b>7,960</b>	<b>216</b>	<b>1,719,360</b>	<b>26 lbs</b>	<b>23.16</b>	<b>39,820,400</b>
	2007	8,192	8,190	258	2,113,020	26 lbs	22.88	48,345,900
<b>Cherries</b>	<b>2008</b>	<b>26</b>	<b>26</b>	<b>350</b>	<b>9,100</b>	<b>18 lbs</b>	<b>25.00</b>	<b>227,500</b>
	2007	31	0	No Harvest due to frost				-
<b>Dates</b>	<b>2008</b>	<b>8,266</b>	<b>5,224</b>	<b>3.96</b>	<b>20,687</b>	<b>tons</b>	<b>1,554.00</b>	<b>32,147,700</b>
<b>Culls</b>	<b>2008</b>			<b>0.27</b>	<b>1,410</b>	<b>tons</b>	<b>64.00</b>	<b>90,300</b>
Dates	2007	7,373	4,850	4.05	19,643	tons	1,550.00	30,445,900
Culls	2007			0.28	1,358	tons	60.00	81,500
<b>Grapes - Table* (Total)</b>	<b>2008</b>	<b>8,791</b>	<b>8,571</b>	<b>Listed by Variety below.</b>				<b>92,843,300</b>
	2007	9,570	9,216					104,635,100
<b>Beauty Seedless</b>	<b>2008</b>	<b>176</b>	<b>176</b>	<b>805</b>	<b>141,680</b>	<b>18 lbs</b>	<b>17.90</b>	<b>2,536,100</b>
	2007	116	116	702	81,432	18 lbs	24.47	1,992,600
<b>Exotic</b>	<b>2008</b>	<b>None</b>						
	2007	13	13	325	4,225	18 lbs	6.46	27,300
<b>Flame Seedless</b>	<b>2008</b>	<b>4,470</b>	<b>4,350</b>	<b>856</b>	<b>3,723,600</b>	<b>18 lbs</b>	<b>13.34</b>	<b>49,672,800</b>
	2007	4,600	4,562	762	3,476,244	18 lbs	16.17	56,210,900
<b>Perlette</b>	<b>2008</b>	<b>621</b>	<b>621</b>	<b>609</b>	<b>378,189</b>	<b>18 lbs</b>	<b>13.16</b>	<b>4,977,000</b>
	2007	776	776	618	479,568	18 lbs	22.56	10,819,100
<b>Thompson Seedless</b>	<b>2008</b>	<b>633</b>	<b>633</b>	<b>700</b>	<b>443,100</b>	<b>18 lbs</b>	<b>13.53</b>	<b>5,995,100</b>
	2007	1,195	1,195	442	528,190	18 lbs	12.12	6,401,700
<b>Other Varieties</b>	<b>2008</b>	<b>2,891</b>	<b>2,791</b>	<b>789</b>	<b>2,202,099</b>	<b>18 lbs</b>	<b>13.47</b>	<b>29,662,300</b>
	2007	2,870	2,554	683	1,744,382	18 lbs	16.73	29,183,500
<b>Grapes - Wine</b>	<b>2008</b>	<b>2,365</b>	<b>2,165</b>	<b>1.85</b>	<b>4,005</b>	<b>tons</b>	<b>1,121.00</b>	<b>4,489,900</b>
	2007	2,336	2,000	1.70	3,400	tons	1,184.00	4,025,600
<b>Miscellaneous**/***</b>	<b>2008</b>	<b>719</b>	<b>400</b>	<b>5.33</b>	<b>2,132</b>	<b>tons</b>	<b>1,478.00</b>	<b>3,151,100</b>
	2007	610	399	2.14	853	tons	1,328.00	1,132,500
<b>Peaches</b>	<b>2008</b>	<b>111</b>	<b>105</b>	<b>299</b>	<b>31,395</b>	<b>22 lbs</b>	<b>19.28</b>	<b>605,300</b>
	2007	110	110	297	32,670	22 lbs	16.10	526,000
<b>Pears</b>	<b>2008</b>	<b>16</b>	<b>16</b>	<b>200</b>	<b>3,200</b>	<b>22 lbs</b>	<b>15.00</b>	<b>48,000</b>
	2007	20	0	No Harvest due to frost				-
<b>Persimmons</b>	<b>2008</b>	<b>32</b>	<b>32</b>	<b>400</b>	<b>12,800</b>	<b>24 lbs</b>	<b>15.00</b>	<b>192,000</b>
	2007	15	15	350	5,250	24 lbs	15.00	78,800
<b>TOTAL</b>	<b>2008</b>	<b>28,408</b>	<b>24,545</b>					<b>173,678,000</b>
	2007	28,417	24,790					189,286,500

\* Harvested Acreage supplied by the California Desert Grape Administrative Committee. Revised value for 2007.

\*\* Includes: Figs, Jojoba, Mangoes, Nectarines, Olives, Plums, Pomegranates, Raisins, Walnuts, Other.

\*\*\* No Harvest: Almonds, Guava, Longans, Lychees, Pistachio.



## VEGETABLE, MELON & MISCELLANEOUS CROPS

	Year	Harvested Acreage	Production		Unit	Value	
			Per Acre	Total		Per Unit	Total
<b>Artichokes</b>	<b>2008</b>	<b>757</b>	<b>488</b>	<b>369,416</b>	<b>23 lbs</b>	<b>18.92</b>	<b>6,989,400</b>
	2007	677	468	316,836	23 lbs	17.46	5,532,000
<b>Beans-Green</b>	<b>2008</b>	<b>1,055</b>	<b>411</b>	<b>433,605</b>	<b>30 lbs</b>	<b>17.33</b>	<b>7,514,400</b>
	2007	853	385	328,405	30 lbs	18.64	6,121,500
<b>Broccoli</b>	<b>2008</b>	<b>2,613</b>	<b>528</b>	<b>1,379,664</b>	<b>23 lbs</b>	<b>8.03</b>	<b>11,078,700</b>
	2007	2,874	528	1,517,472	23 lbs	7.87	11,942,500
<b>Cabbage</b>	<b>2008</b>	<b>158</b>	<b>710</b>	<b>112,180</b>	<b>50 lbs</b>	<b>5.50</b>	<b>617,000</b>
	2007	132	453	59,796	50 lbs	5.28	315,700
<b>Carrots</b>	<b>2008</b>	<b>2,689</b>	<b>702</b>	<b>1,887,678</b>	<b>26 lbs</b>	<b>5.51</b>	<b>10,401,100</b>
	2007	1,964	28	54,992	tons	130.00	7,149,000
<b>Cauliflower</b>	<b>2008</b>	<b>1,287</b>	<b>628</b>	<b>808,236</b>	<b>23 lbs</b>	<b>8.78</b>	<b>7,096,300</b>
	2007	1,291	762	983,742	23 lbs	10.03	9,866,900
<b>Celery</b>	<b>2008</b>	<b>254</b>	<b>1,124</b>	<b>285,496</b>	<b>60 lbs</b>	<b>9.66</b>	<b>2,757,900</b>
	2007	331	1,461	483,591	60 lbs	9.45	4,569,900
<b>Corn-Sweet</b>	<b>2008</b>	<b>2,543</b>	<b>365</b>	<b>928,195</b>	<b>45 lbs</b>	<b>10.31</b>	<b>9,569,700</b>
	2007	2,437	317	772,529	45 lbs	7.60	5,871,200
<b>Eggplant</b>	<b>2008</b>	<b>364</b>	<b>1,003</b>	<b>365,092</b>	<b>20 lbs</b>	<b>9.50</b>	<b>3,468,400</b>
	2007	477	851	405,927	20 lbs	8.64	3,507,200
<b>Lettuce Head</b>	<b>2008</b>	<b>877</b>	<b>581</b>	<b>509,537</b>	<b>50 lbs</b>	<b>6.15</b>	<b>3,133,700</b>
	2007	1,148	493	565,964	50 lbs	8.31	4,703,200
<b>Loose Leaf</b>	<b>2008</b>	<b>1,270</b>	<b>1,099</b>	<b>1,395,730</b>	<b>22 lbs</b>	<b>8.06</b>	<b>11,249,600</b>
	2007	1,634	997	1,629,098	22 lbs	8.41	13,700,700
<b>Romaine</b>	<b>2008</b>	<b>2,484</b>	<b>845</b>	<b>2,098,980</b>	<b>35 lbs</b>	<b>8.65</b>	<b>18,156,200</b>
	2007	2,582	895	2,310,890	35 lbs	8.84	20,428,300
<b>Melons Cantaloupe</b>	<b>2008</b>	<b>939</b>	<b>584</b>	<b>548,376</b>	<b>40 lbs</b>	<b>6.91</b>	<b>3,789,300</b>
	2007	912	733	668,496	40 lbs	5.07	3,389,300
<b>Crenshaw</b>	<b>2008</b>	<b>159</b>	<b>698</b>	<b>110,982</b>	<b>29 lbs</b>	<b>6.22</b>	<b>690,300</b>
	2007		Miscellaneous				
<b>Honeydew</b>	<b>2008</b>	<b>1,021</b>	<b>1,035</b>	<b>1,056,735</b>	<b>29 lbs</b>	<b>5.86</b>	<b>6,192,500</b>
	2007	1,394	858	1,196,052	29 lbs	4.55	5,442,000
<b>Mixed</b>	<b>2008</b>	<b>1,229</b>	<b>723.0</b>	<b>888,567</b>	<b>33 lbs</b>	<b>6.59</b>	<b>5,855,700</b>
	2007	650	9.0	5,850	tons	379.00	2,217,200

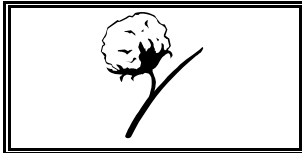


## VEGETABLE, MELON & MISCELLANEOUS CROPS

	Year	Harvested Acreage	Production		Unit	Value	
			Per Acre	Total		Per Unit	Total
<b>Melons</b>							
Watermelon	2008	1,438	49.4	71,037	tons	266.00	18,895,900
	2007	1,621	41.0	66,461	tons	119.00	7,908,900
Miscellaneous*	2008	1,859	10.9	20,263	tons	605.00	12,259,200
	2007	2,647	10.8	28,588	tons	484.00	13,836,400
<b>Onions-Dry</b>							
	2008		<b>Miscellaneous</b>				
	2007	342	1,250	427,500	50 lbs	6.25	2,671,900
<b>Onions-Green</b>							
	2008	237	632	149,784	35 lbs	12.53	1,876,800
	2007		Miscellaneous				
<b>Oriental Vegetables</b>							
	2008	2,545	6.89	17,535	tons	1,082.00	18,972,900
	2007	2,883	8.67	24,996	tons	1,045.00	26,120,400
<b>Peppers</b>							
Bell	2008	4,448	1,094	4,866,112	30 lbs	14.13	68,758,200
	2007	4,469	860	3,843,340	30 lbs	12.50	48,041,800
<b>Potatoes</b>							
Fall	2008	992	248	246,016	100 lbs	21.65	5,326,200
	2007	495	176	87,120	100 lbs	17.97	1,565,500
Spring	2008	3,626	187	678,062	100 lbs	19.17	12,998,400
	2007	2,124	302	641,448	100 lbs	15.02	9,634,500
<b>Radishes</b>							
	2008	235	1,267	297,745	35 lbs	3.45	1,027,200
	2007	258	900	232,200	35 lbs	4.65	1,079,700
<b>Spices/Herbs</b>							
	2008	1,175	1,150	1,351,250	28 lbs	5.19	7,013,000
	2007	1,054	1,150	1,212,100	28 lbs	4.25	5,151,400
<b>Spinach</b>							
	2008	1,133	838	949,454	30 lbs	6.34	6,019,500
	2007	1,083	831	899,973	30 lbs	8.53	7,676,800
<b>Squash, All</b>							
	2008	209	6.59	1,377	tons	415.00	571,600
	2007	379	14.50	5,496	tons	268.00	1,472,800
<b>Strawberries</b>							
	2008	280	986	276,080	12 lbs	8.10	2,236,200
	2007	280	989	276,920	12 lbs	8.62	2,387,100
<b>Tomatoes</b>							
	2008	266	509	135,394	20 lbs	14.03	1,899,600
	2007	287	559	160,433	20 lbs	15.90	2,550,900
<b>TOTAL</b>							
	2008	38,142					\$266,414,900
	2007	37,278					234,854,700

\* Includes: Anise, Arugula, Asparagus, Blueberries, Broccoli-Chinese, Cabbage-Chinese, Cabbage-Napa, Carrots-processing, Celery-Chinese, Chard, Chives, Cilantro, Cucumbers, Daikon, Dandelion, Dill, Endive, Escarole, Fennel, Garlic, Greens-Collard, Greens-mixed, Kale, Kohlrabi, Leeks, Mustard, Okra, Parsley, Pumpkins, Rutabaga, Spinach-Chinese, Tomatoes-Cherry, Turnips, Watermelons-mini, Other.





## FIELD AND SEED CROPS

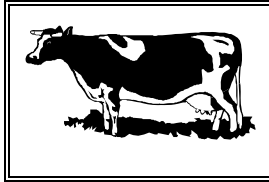
	Year	Harvested Acreage	Production		Unit	Value	
			Per Acre	Total		Per Unit	Total
<b>Cotton</b>							
<b>Short Staple</b>	<b>2008</b>	<b>13,300</b>	<b>4.10</b>	<b>54,530</b>	<b>500 lbs</b>	<b>250.00</b>	<b>13,632,500</b>
	2007	15,300	3.28	50,184	500 lbs	250.00	12,546,000
<b>Seed</b>	<b>2008</b>		<b>1.50</b>	<b>19,950</b>	<b>tons</b>	<b>150.00</b>	<b>2,992,500</b>
	2007		1.19	18,207	tons	200.00	3,641,400
<b>Grain</b>							
<b>Milo</b>	<b>2008</b>	<b>247</b>	<b>3.15</b>	<b>778</b>	<b>tons</b>	<b>187.00</b>	<b>145,500</b>
	2007						
<b>Oats</b>	<b>2008</b>		<b>Miscellaneous</b>				
	2007		Miscellaneous				
<b>Wheat</b>	<b>2008</b>	<b>20,564</b>	<b>1.60</b>	<b>32,902</b>	<b>tons</b>	<b>293.00</b>	<b>9,640,400</b>
	2007	1,737	2.28	3,960	tons	213.00	843,600
<b>Hay</b>							
<b>Alfalfa</b>	<b>2008</b>	<b>55,988</b>	<b>7.90</b>	<b>442,305</b>	<b>tons</b>	<b>179.00</b>	<b>79,172,600</b>
	2007	45,351	8.50	385,484	tons	166.00	63,990,300
<b>Barley</b>	<b>2008</b>		<b>Miscellaneous</b>				<b>-</b>
	2007		No Harvest due to drought				-
<b>Bermuda Grass</b>	<b>2008</b>	<b>1,505</b>	<b>6.70</b>	<b>10,084</b>	<b>tons</b>	<b>195.00</b>	<b>1,966,300</b>
	2007	1,104	7.60	8,390	tons	125.00	1,048,800
<b>Four Way</b>	<b>2008</b>		<b>None</b>				
	2007	2,013	3.00	6,039	tons	125.00	754,900
<b>Klein Grass</b>	<b>2008</b>	<b>2,943</b>	<b>8.60</b>	<b>25,310</b>	<b>tons</b>	<b>140.00</b>	<b>3,543,400</b>
	2007	2,288	8.50	19,448	tons	112.00	2,178,200
<b>Oats</b>	<b>2008</b>	<b>1,571</b>	<b>1.00</b>	<b>1,571</b>	<b>tons</b>	<b>153.00</b>	<b>240,400</b>
	2007	878	2.90	2,546	tons	161.00	409,900
<b>Sudan</b>	<b>2008</b>	<b>4,788</b>	<b>4.60</b>	<b>22,025</b>	<b>tons</b>	<b>144.00</b>	<b>3,171,600</b>
	2007	1,887	5.00	9,435	tons	113.00	1,066,200
<b>Wheat</b>	<b>2008</b>	<b>200</b>	<b>1.00</b>	<b>200</b>	<b>tons</b>	<b>80.00</b>	<b>16,000</b>
	2007		No Harvest due to drought				-
<b>Miscellaneous*</b>	<b>2008</b>	<b>244</b>	<b>3.00</b>	<b>732</b>	<b>tons</b>	<b>100.00</b>	<b>73,200</b>
	2007	271	2.60	705	tons	136.00	95,800
<b>Pasture-Irrigated</b>	<b>2008</b>	<b>15,907</b>		<b>15,907</b>	<b>acres</b>	<b>114.00</b>	<b>1,813,400</b>
	2007	15,660		15,660	acres	113.00	1,769,600
<b>Rangeland</b>	<b>2008</b>	<b>25,000</b>		<b>25,000</b>	<b>acres</b>	<b>4.00</b>	<b>100,000</b>
	2007	25,000		25,000	acres	5.00	125,000



## FIELD AND SEED CROPS

	Year	Harvested Acreage	Production		Unit	Value	
			Per Acre	Total		Per Unit	Total
<b>Silage and Green Chop</b>							
<b>Alfalfa</b>	<b>2008</b>	<b>1,153</b>	<b>47.00</b>	<b>54,191</b>	<b>tons</b>	<b>40.00</b>	<b>2,167,600</b>
	2007	1,203	50.00	60,150	tons	37.00	2,225,600
<b>Barley</b>	<b>2008</b>		<b>None</b>				
	2007		Miscellaneous				
<b>Corn</b>	<b>2008</b>	<b>957</b>	<b>25.00</b>	<b>23,925</b>	<b>tons</b>	<b>50.00</b>	<b>1,196,300</b>
	2007	967	25.00	24,175	tons	50.00	1,208,800
<b>Oats</b>	<b>2008</b>	<b>646</b>	<b>7.50</b>	<b>4,845</b>	<b>tons</b>	<b>33.00</b>	<b>159,900</b>
	2007	131	11.00	1,441	tons	30.00	43,200
<b>Sorghum</b>	<b>2008</b>	<b>1,127</b>	<b>19.00</b>	<b>21,413</b>	<b>tons</b>	<b>50.00</b>	<b>1,070,700</b>
	2007	1,122	15.00	16,830	tons	63.00	1,060,300
<b>Sudan</b>	<b>2008</b>		<b>None</b>				
	2007	455	2.35	1,069	tons	45.00	48,100
<b>Wheat</b>	<b>2008</b>	<b>7,793</b>	<b>9.50</b>	<b>74,034</b>	<b>tons</b>	<b>33.00</b>	<b>2,443,100</b>
	2007	2,841	9.50	26,990	tons	45.00	1,214,500
<b>Seed</b>							
<b>Bermuda Grass</b>	<b>2008</b>		<b>None</b>				
	2007		Miscellaneous				
<b>Sugar Beets</b>	<b>2008</b>		<b>None</b>				
	2007	165	32.0	5,280	tons	42	221,800
<b>TOTAL</b>	<b>2008</b>	<b>153,933</b>					<b>123,545,400</b>
	2007	118,373					94,492,000

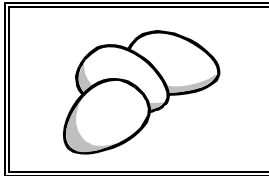
\* Includes: Grain-Oats, Hay-Barley.



## LIVESTOCK AND POULTRY

	Year	Number of Head	Total Liveweight	Unit	Value	
					Per Unit	Total
<b>Cattle and Calves</b>	<b>2008</b>	<b>43,773</b>	<b>232,245</b>	<b>cwt</b>	<b>68.22</b>	<b>15,843,800</b>
	2007	48,062	254,660	cwt	71.60	18,233,700
<b>Sheep and Lambs</b>	<b>2008</b>	<b>12,700</b>	<b>20,800</b>	<b>cwt</b>	<b>56.00</b>	<b>1,164,800</b>
	2007	29,800	37,300	cwt	96.00	3,580,800
<b>Other Livestock*</b>	<b>2008</b>			<b>various</b>		<b>5,750,400</b>
	2007			various		6,565,100
<b>TOTAL</b>	<b>2008</b>					<b>\$22,759,000</b>
	2007					28,379,600

\* Includes Baby Chicks, Chickens, Ducks, Pheasants

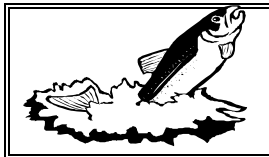


## LIVESTOCK AND POULTRY PRODUCTS

	Year	Production	Unit	Value	
				Per Unit	Total
<b>Eggs</b>	<b>2008</b>	<b>114,004,000</b>	<b>dozen</b>	<b>0.97</b>	<b>110,583,900</b>
	2007	110,596,190	dozen	0.82	90,688,900
<b>Milk*</b>	<b>2008</b>	<b>11,016,061</b>	<b>cwt</b>	<b>17.03</b>	<b>187,603,500</b>
	2007	12,166,039	cwt	18.05	219,655,600
<b>Other Products**</b>	<b>2008</b>				<b>114,500</b>
	2007				214,500
<b>TOTAL</b>	<b>2008</b>				<b>\$298,301,900</b>
	2007				310,559,000

\*Information Supplied by: California Agricultural Statistics Service. Includes Fresh Market and Manufacturec

\*\*Includes Wool.



## AQUACULTURE

	Year	Production	Unit	Value	
				Per Unit	Total
<b>Catfish</b>	<b>2008</b>	<b>322,643</b>	<b>lbs</b>	<b>2.18</b>	<b>703,400</b>
	2007	193,590	lbs	2.09	404,600
<b>Miscellaneous*</b>	<b>2008</b>		<b>various</b>		<b>4,887,500</b>
	2007		various		4,710,100
<b>Tilapia</b>	<b>2008</b>	<b>2,845,074</b>	<b>lbs</b>	<b>2.28</b>	<b>6,486,800</b>
	2007	2,076,881	lbs	2.27	4,714,500
<b>Total</b>	<b>2008</b>				<b>\$12,077,700</b>
	2007				9,829,200

\* Includes Goldfish, Koi, Carp, Trout, Bass



## NURSERY STOCK PRODUCTION

	Year	Acres	Production	Unit	Valuation
<b>Ornamental Nursery Stock</b>	<b>2008</b>	<b>5,109</b>	<b>60,005,152</b>	<b>various</b>	<b>190,845,600</b>
	2007	5,276	57,290,572	various	204,889,800
<b>Cut Flowers and Cut Greens</b>	<b>2008</b>	<b>127</b>	<b>3,648,020</b>	<b>cuttings</b>	<b>3,025,400</b>
	2007	123	4,487,000	cuttings	3,239,400
<b>Ground Cover, Liners, Transplants</b>	<b>2008</b>	<b>Ornamental Nursery Stock</b>			
	2007	Ornamental Nursery Stock			
<b>Christmas Trees (cut)</b>	<b>2008</b>	<b>62</b>	<b>7,800</b>	<b>each</b>	<b>273,000</b>
	2007	55	8,000	each	320,000
<b>Turf</b>	<b>2008</b>	<b>2,475</b>	<b>107,811,000</b>	<b>square feet</b>	<b>25,699,700</b>
	2007	4,901	212,822,400	square feet	52,726,500
<b>Farm Planting Stock</b>	<b>2008</b>	<b>214</b>	<b>457,982</b>	<b>various</b>	<b>10,572,500</b>
	2007	226	478,000	various	11,150,500
<b>TOTAL</b>	<b>2008</b>	<b>7,987</b>			<b>\$230,416,200</b>
	2007	10,581			272,326,200



## APICULTURE

	Year	Production	Unit	Value Per Unit	Total
<b>Honey</b>	<b>2008</b>	<b>900,800</b>	<b>lbs</b>	<b>1.3</b>	<b>1,171,000</b>
	2007	382,404	lbs	0.88	336,500
<b>Beeswax</b>	<b>2008</b>	<b>37,650</b>	<b>lbs</b>	<b>2.00</b>	<b>75,300</b>
	2007	16,340	lbs	2.00	32,700
<b>Queen Cells</b>	<b>2008</b>	<b>1,500</b>	<b>each</b>	<b>15.00</b>	<b>22,500</b>
	2007	300	each	20.00	6,000
<b>Fees Collected for Pollination</b>	<b>2008</b>	<b>30,980</b>	<b>colonies</b>	<b>141.00</b>	<b>4,368,200</b>
	2007	25,710	colonies	139.00	3,573,700
<b>Total Colonies</b>	<b>2008</b>	<b>26,500</b>			
	2007	28,970			
<b>TOTAL</b>	<b>2008</b>				<b>\$5,637,000</b>
	2007				3,948,900

## DISTRICT VALUATIONS - AGRICULTURAL CROPS

District	2004	2005	2006	2007	2008
Riverside/Corona	103,967,000	114,774,700	97,897,700	118,897,000	100,431,600
San Jacinto/Temecula Valley	182,021,700	174,613,400	184,517,700	194,148,400	165,022,400
Coachella Valley	416,373,900	503,523,700	483,174,000	486,898,900	503,782,700
Palo Verde Valley	96,535,100	99,360,000	90,534,900	112,961,900	165,870,000
<b>Total Crop Valuation</b>	<b>798,897,700</b>	<b>892,271,800</b>	<b>856,124,300</b>	<b>912,906,200</b>	<b>935,106,700</b>

## ACREAGE STATISTICS

Crop	2004	2005	2006	2007	2008
Citrus	20,867	20,675	18,568	19,401	17,691
Tree and Vine	28,356	28,610	27,501	28,417	28,408
Vegetable, Melons, Misc.	26,075	35,615	34,057	37,278	38,142
Field and Seed	152,884	138,948	125,311	118,373	153,784
Nursery	7,514	8,138	10,782	10,581	7,987
<b>Total Planted Acreage</b>	<b>235,696</b>	<b>223,848</b>	<b>216,219</b>	<b>203,469</b>	<b>246,012</b>

## TOTAL VALUATION - F.O.B.

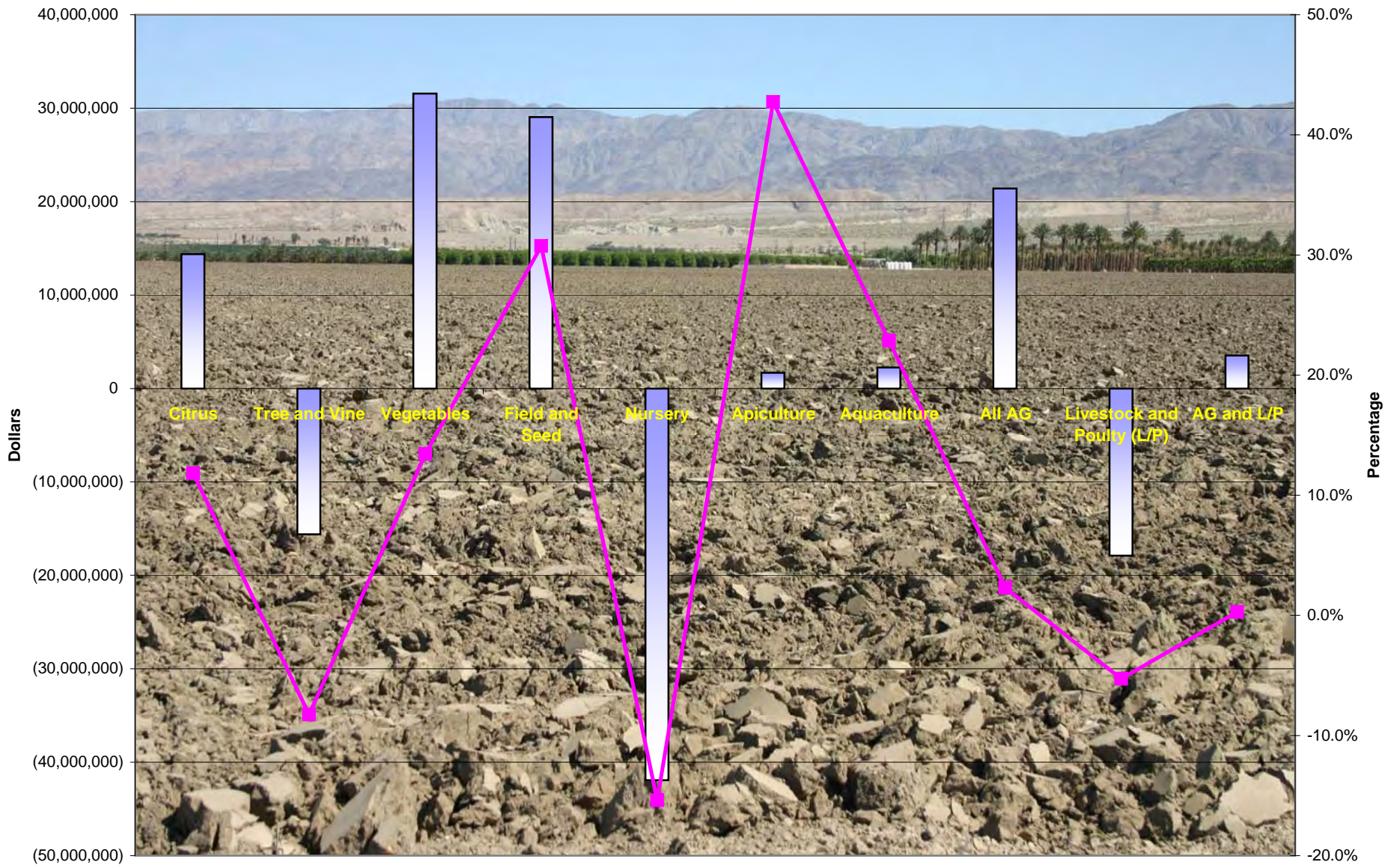
Crop	2004	2005	2006	2007	2008
Citrus	123,574,100	138,244,700	107,897,000	121,387,100	135,759,800
Tree and Vine*	211,936,500	188,553,200	191,321,200	189,286,500	173,678,000
Vegetable, Melons, Misc.	174,866,300	261,019,500	213,643,300	234,854,700	266,414,900
Field and Seed	75,219,000	77,687,300	68,611,700	94,492,000	123,545,400
Nursery	211,271,200	229,210,200	270,992,800	272,326,200	230,416,200
Apiculture	2,951,300	2,736,800	3,554,300	3,948,900	5,637,000
Aquaculture	15,579,100	13,367,300	11,514,700	9,829,200	12,077,700
<b>Total Crop</b>	<b>815,397,500</b>	<b>910,819,000</b>	<b>867,535,000</b>	<b>926,124,600</b>	<b>947,529,000</b>
Livestock and Poultry	316,207,700	257,852,100	234,903,400	338,938,600	321,060,900
<b>GRAND TOTAL *</b>	<b>1,131,605,200</b>	<b>1,168,671,100</b>	<b>1,102,438,400</b>	<b>1,265,063,200</b>	<b>1,268,589,900</b>

\* Revised 2007 figures.

## Value Changes 2007 to 2008

<u>Crop</u>	<u>Value</u>		<u>Value Change (\$)</u>	<u>Value Change (%)</u>
	<u>2008</u>	<u>2007</u>		
Citrus	135,759,800	121,387,100	14,372,700	11.8%
Tree and Vine	173,678,000	189,286,500	(15,608,500)	-8.2%
Vegetables	266,414,900	234,854,700	31,560,200	13.4%
Field and Seed	123,545,400	94,492,000	29,053,400	30.7%
Nursery	230,416,200	272,326,200	(41,910,000)	-15.4%
Apiculture	5,637,000	3,948,900	1,688,100	42.7%
Aquaculture	12,077,700	9,829,200	2,248,500	22.9%
<b>All AG</b>	<b>947,529,000</b>	<b>926,124,600</b>	<b>21,404,400</b>	<b>2.3%</b>
<b>Livestock and Poultry (L/P)</b>	<b>321,060,900</b>	<b>338,938,600</b>	<b>(17,877,700)</b>	<b>-5.3%</b>
<b>AG and L/P</b>	<b>1,268,589,900</b>	<b>1,265,063,200</b>	<b>3,526,700</b>	<b>0.3%</b>

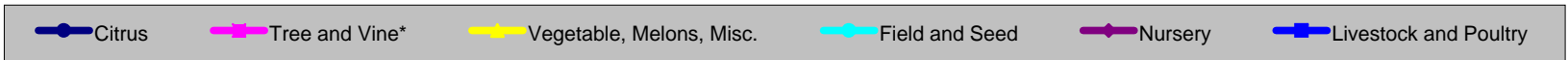
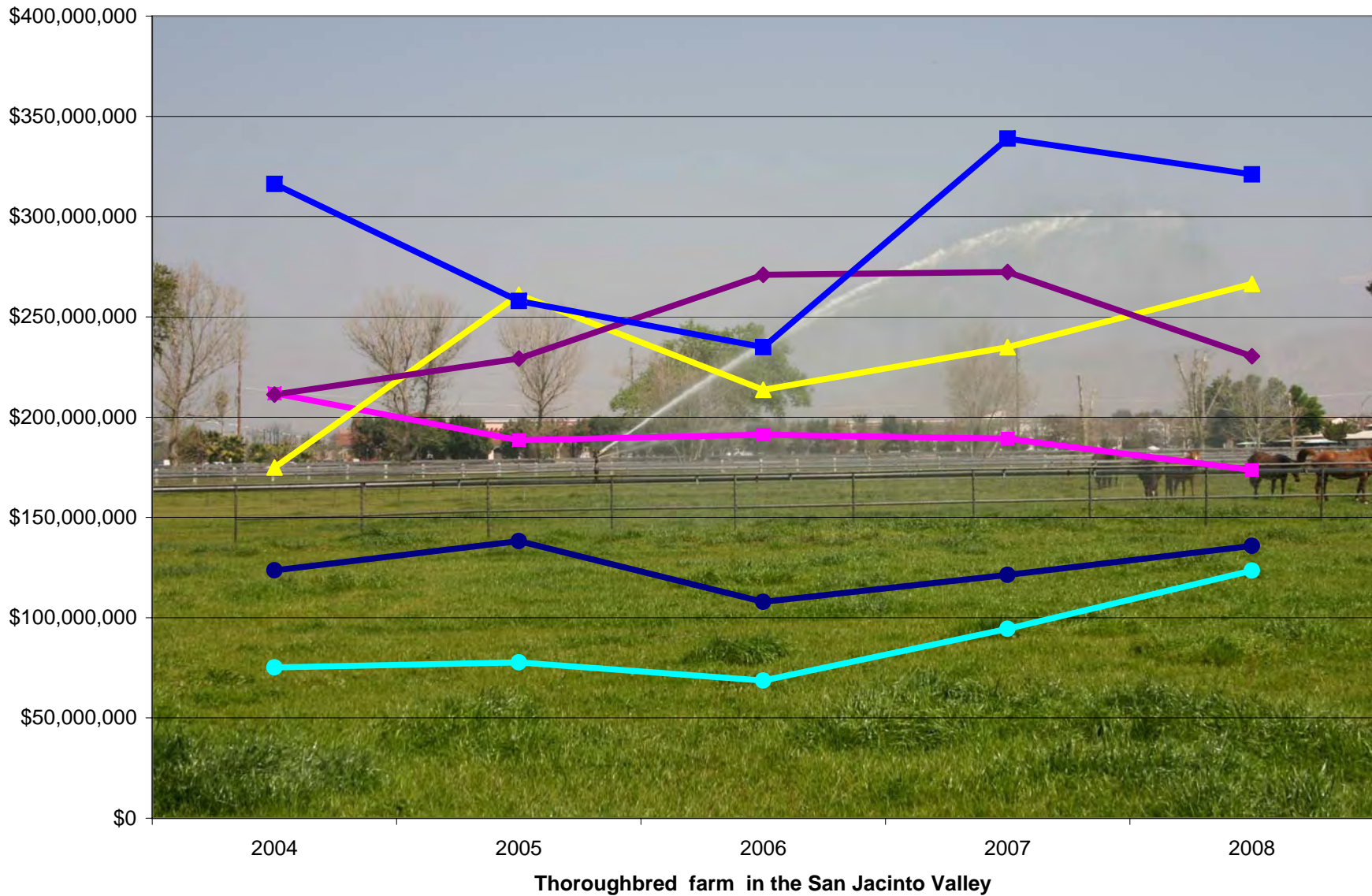
# Production Value Changes - Major Crops - 2007 to 2008



Fallow field in the Coachella Valley

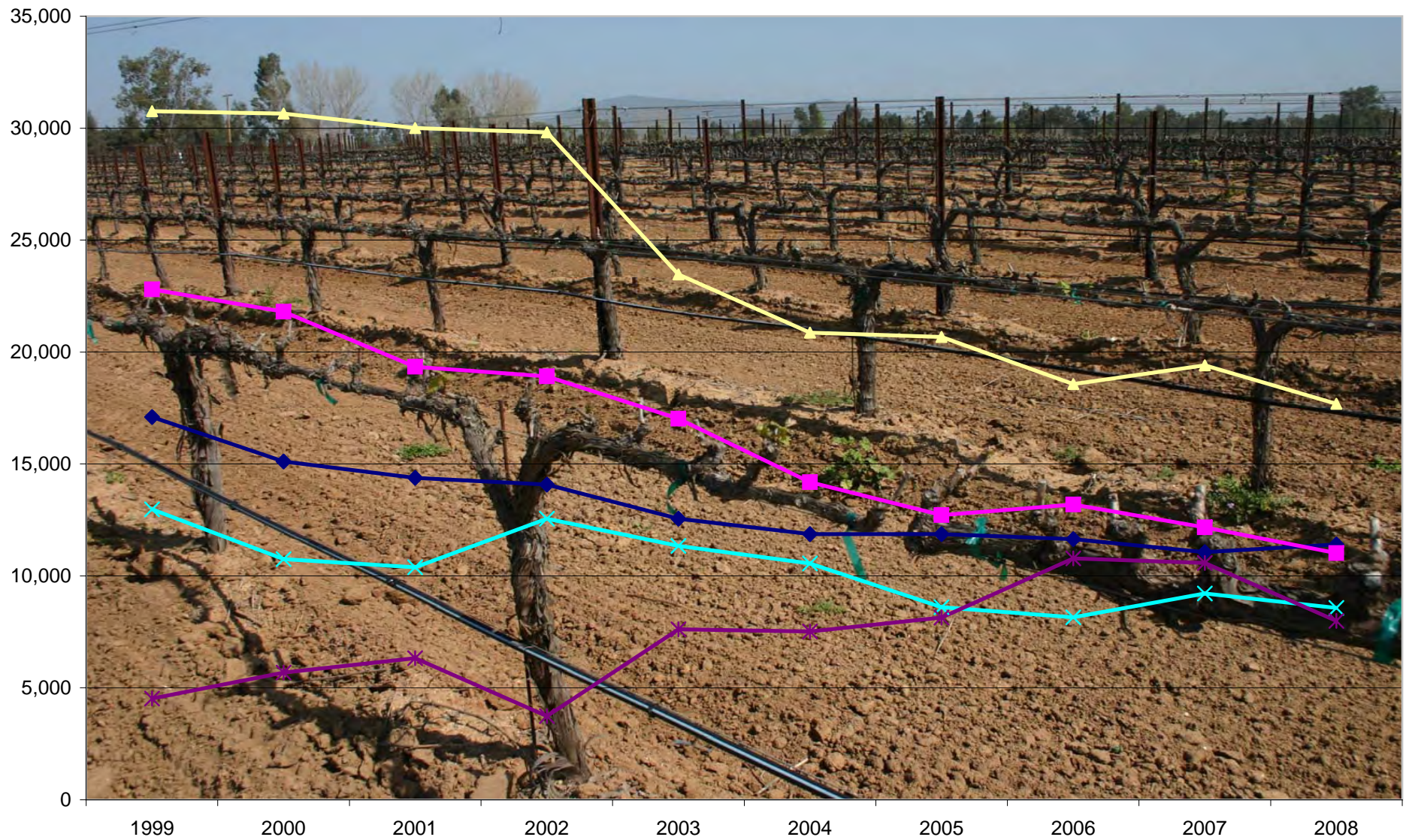
Value Change (\$)   
 Value Change (%)

## Agricultural Production Valuation by Crop Type 2004-2008





# Major Crop Trends 1999-2008



Wine Grape vineyard in the Temecula area



## RIVERSIDE COUNTY LEADING AGRICULTURAL VALUATIONS

<u>2007</u>			<u>2008</u>		
1	Nursery Stock	\$ 272,326,200	1	Nursery Stock	\$ 230,416,000
2	Milk	219,655,600	2	Milk	187,603,500
3	Grapes, Table *	104,635,100	3	Eggs	110,583,900
4	Eggs	90,688,900	4	Grapes, Table	92,843,300
5	Hay	69,448,300	5	Hay	88,110,300
6	Avocados	48,345,700	6	Peppers, Bell	68,758,200
7	Peppers, Bell	48,041,800	7	Lemons	68,126,500
8	Grapefruit	42,425,400	8	Avocados	39,820,400
9	Lemons	36,095,600	9	Grapefruit	33,201,500
10	Dates	30,527,400	10	Dates	32,238,000
11	Oriental Vegetables	26,120,400	11	Oriental Vegetables	18,972,900
12	Lettuce, Romaine	20,428,300	12	Watermelons	18,895,900
13	Tangerines/Mandarins	20,299,600	13	Potatoes	18,324,600
14	Cattle/Calves	18,233,700	14	Lettuce, Romaine	18,156,200
15	Cotton	16,187,400	15	Cotton	16,625,000
16	Vegetable, miscellaneous	13,836,400	16	Tangerines/Mandarins	15,972,600
17	Lettuce, Loose Leaf	13,700,700	17	Cattle/Calves	15,843,800
18	Oranges, Navel	12,896,100	18	Vegetable, miscellaneous	12,259,200
19	Broccoli	11,942,500	19	Aquaculture	12,077,700
20	Potatoes	11,200,000	20	Lettuce, Loose Leaf	11,249,600

## CALIFORNIA'S LEADING AGRICULTURAL COUNTIES BY TOTAL VALUE OF PRODUCTION

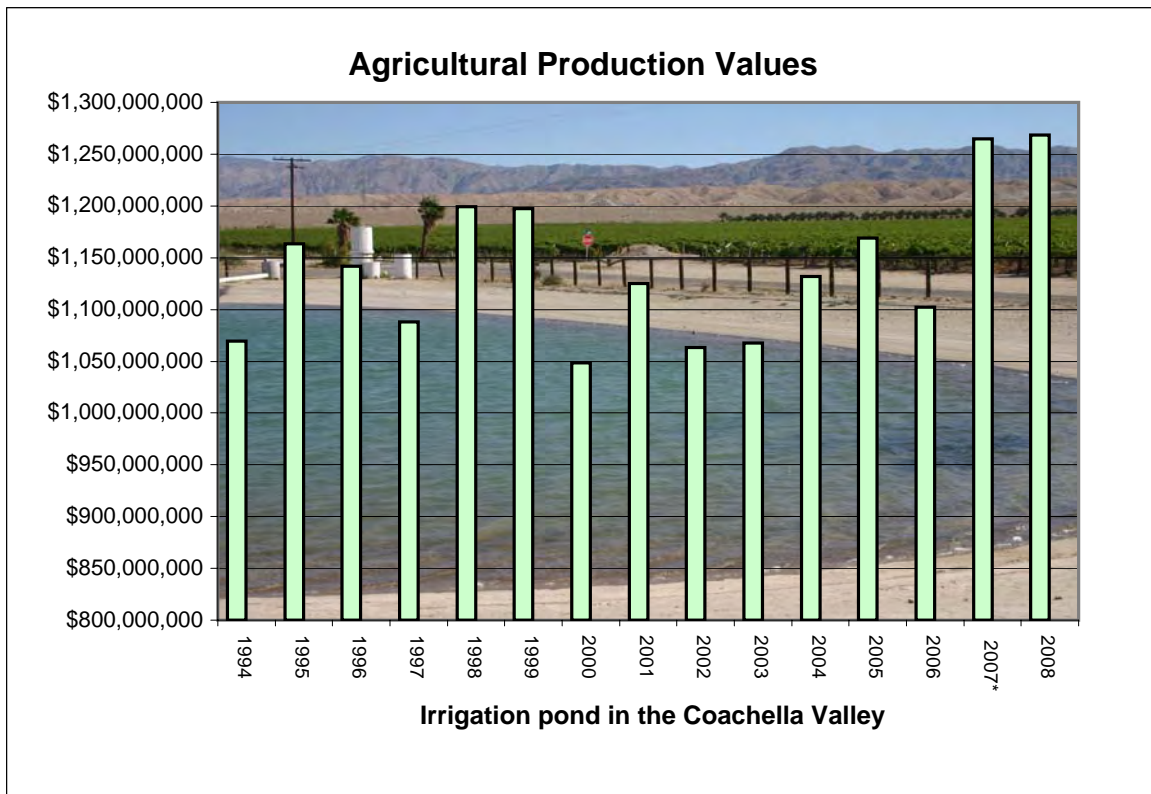
<u>RANK</u>	<u>2005</u>		<u>2006</u>		<u>2007</u>	
	<u>COUNTY</u>	<u>VALUE (\$)</u>	<u>COUNTY</u>	<u>VALUE (\$)</u>	<u>COUNTY</u>	<u>VALUE (\$)</u>
1	Fresno	4,640,166,000	Fresno	4,843,392,000	Fresno	5,345,352,000
2	Tulare	4,360,854,000	Tulare	3,870,843,000	Tulare	4,873,743,000
3	Kern	3,546,925,000	Monterey	3,489,923,000	Kern	4,092,107,000
4	Monterey	3,273,000,000	Kern	3,476,801,000	Monterey	3,823,287,000
5	Merced	2,388,058,000	Merced	2,284,457,000	Merced	3,001,667,000
6	Stanislaus	1,977,596,000	Stanislaus	2,148,152,000	Stanislaus	2,412,339,000
7	San Joaquin	1,743,294,000	San Joaquin	1,684,871,000	San Joaquin	2,005,185,000
8	San Diego	1,531,307,000	Ventura	1,505,588,000	Kings	1,761,852,000
9	Kings	1,407,091,000	San Diego	1,461,476,000	Ventura	1,547,263,000
10	Imperial	1,286,066,000	Imperial	1,307,615,000	San Diego	1,536,260,000
11	Ventura	1,253,048,000	Kings	1,289,186,000	Imperial	1,369,147,000
12	<b>Riverside</b>	1,168,537,000	<b>Riverside</b>	1,102,438,000	<b>Riverside*</b>	1,265,063,000

\* Revised totals.

# RIVERSIDE COUNTY AGRICULTURAL PRODUCTION VALUES 1994-2008

<u>YEAR</u>	<u>VALUE</u>	<u>STATE RANKING</u>
1994	\$1,069,323,000	8
1995	\$1,163,430,300	7
1996	\$1,141,819,800	8
1997	\$1,087,920,000	9
1998	\$1,199,506,700	8
1999	\$1,197,362,000	9
2000	\$1,048,561,600	9
2001	\$1,124,908,400	9
2002	\$1,063,478,000	11
2003	\$1,067,367,300	12
2004	\$1,131,605,200	12
2005	\$1,168,671,100	12
2006	\$1,102,438,400	12
2007*	\$1,265,063,200	12
2008	\$1,268,589,900	

\* Revised Total



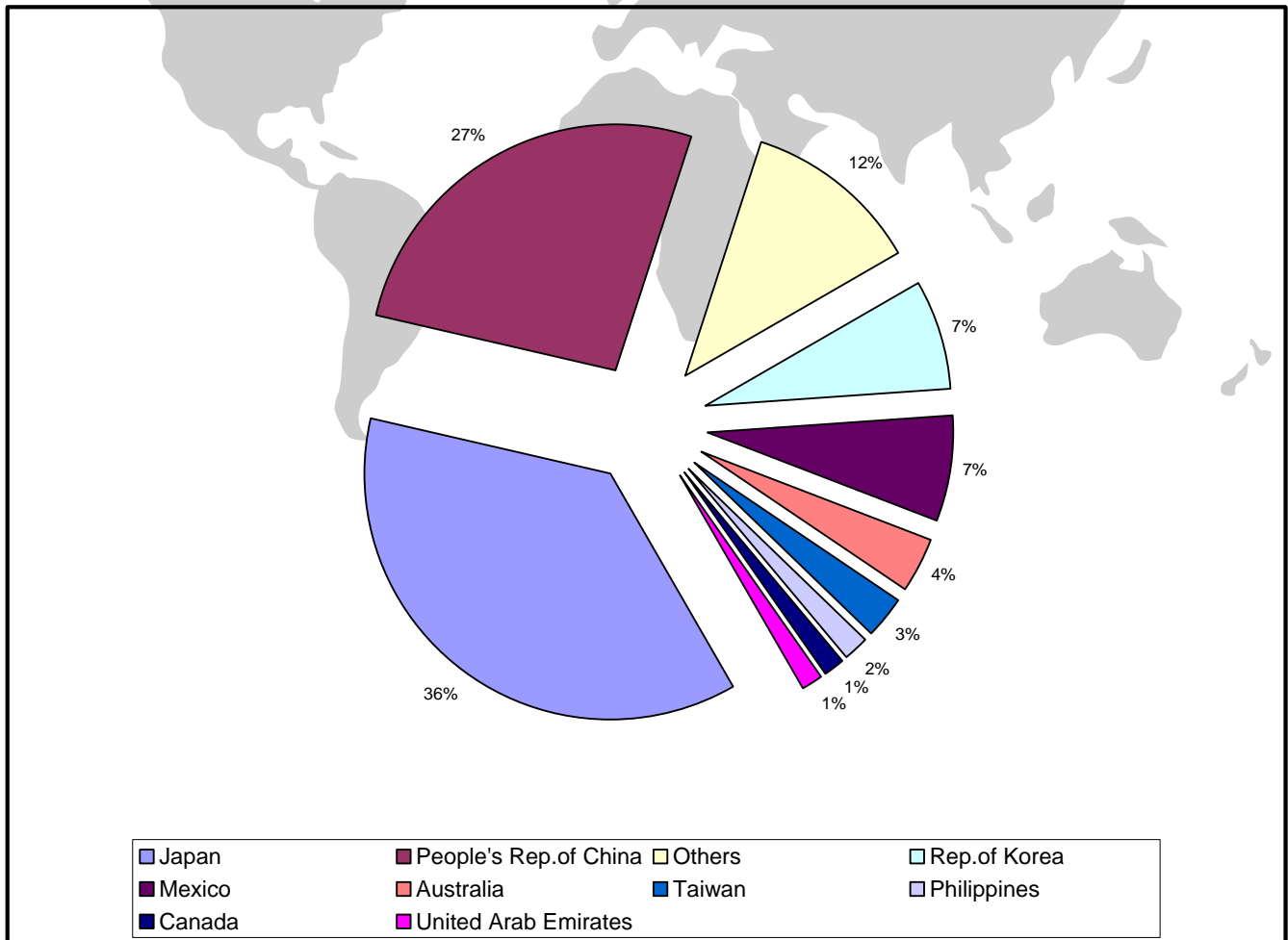
## 2008 Million Dollar Commodities

<u>2008 Rank</u>	<u>Commodity</u>	<u>2007 Rank</u>	<u>2008 Value</u>
1	Nursery Stock	1	\$230,416,200
2	Milk	2	187,603,500
3	Eggs	4	110,583,900
4	Grapes, Table	3	92,843,300
5	Hay	5	88,110,300
6	Peppers, Bell	7	68,758,200
7	Lemons	9	68,126,500
8	Avocados	6	39,820,400
9	Grapefruit	8	33,201,500
10	Dates	10	32,238,000
11	Oriental Vegetables	11	18,972,900
12	Watermelons	24	18,895,900
13	Potatoes	20	18,324,600
14	Lettuce, Romaine	12	18,156,200
15	Cotton	15	16,625,000
16	Tangerines/Mandarins	13	15,972,600
17	Cattle/Calves	14	15,843,800
18	Vegetable, miscellaneous	16	12,259,200
19	Aquaculture	22	12,077,700
20	Lettuce, Loose Leaf	17	11,249,600
21	Broccoli	19	11,078,700
22	Oranges, Valencia	23	10,555,400
23	Carrots	26	10,401,100
24	Grain	n/a	9,785,900
25	Corn, Sweet	29	9,569,700
26	Beans, Green	28	7,514,400
27	Oranges, Navel	18	7,475,300
28	Cauliflower	21	7,096,300
29	Silage/Green Chop	30	7,037,600
30	Spices/Herbs	33	7,013,000
31	Artichokes	31	6,989,400
32	Melons, Honeydew	32	6,192,500
33	Spinach	25	6,019,500
34	Melons, mixed	44	5,855,700
35	Other Livestock	27	5,750,400
36	Apiculture	37	5,637,000
37	Grapes, Wine	36	4,489,900
38	Melons, Cantaloupe	40	3,789,300
39	Eggplant	39	3,468,400
40	Tree/Vine, miscellaneous	48	3,151,100
41	Lettuce, Head	34	3,133,700
42	Celery	35	2,757,900
43	Strawberries	43	2,236,200
44	Tomatoes	42	1,899,600
45	Onions, Green	n/a	1,876,800
46	Pasture, Irrigated	45	1,813,400
47	Sheep/Lambs	38	1,164,800
48	Radishes	46	1,027,200

# PHYTOSANITARY EXPORT CERTIFICATION – 2008

## All Export Countries

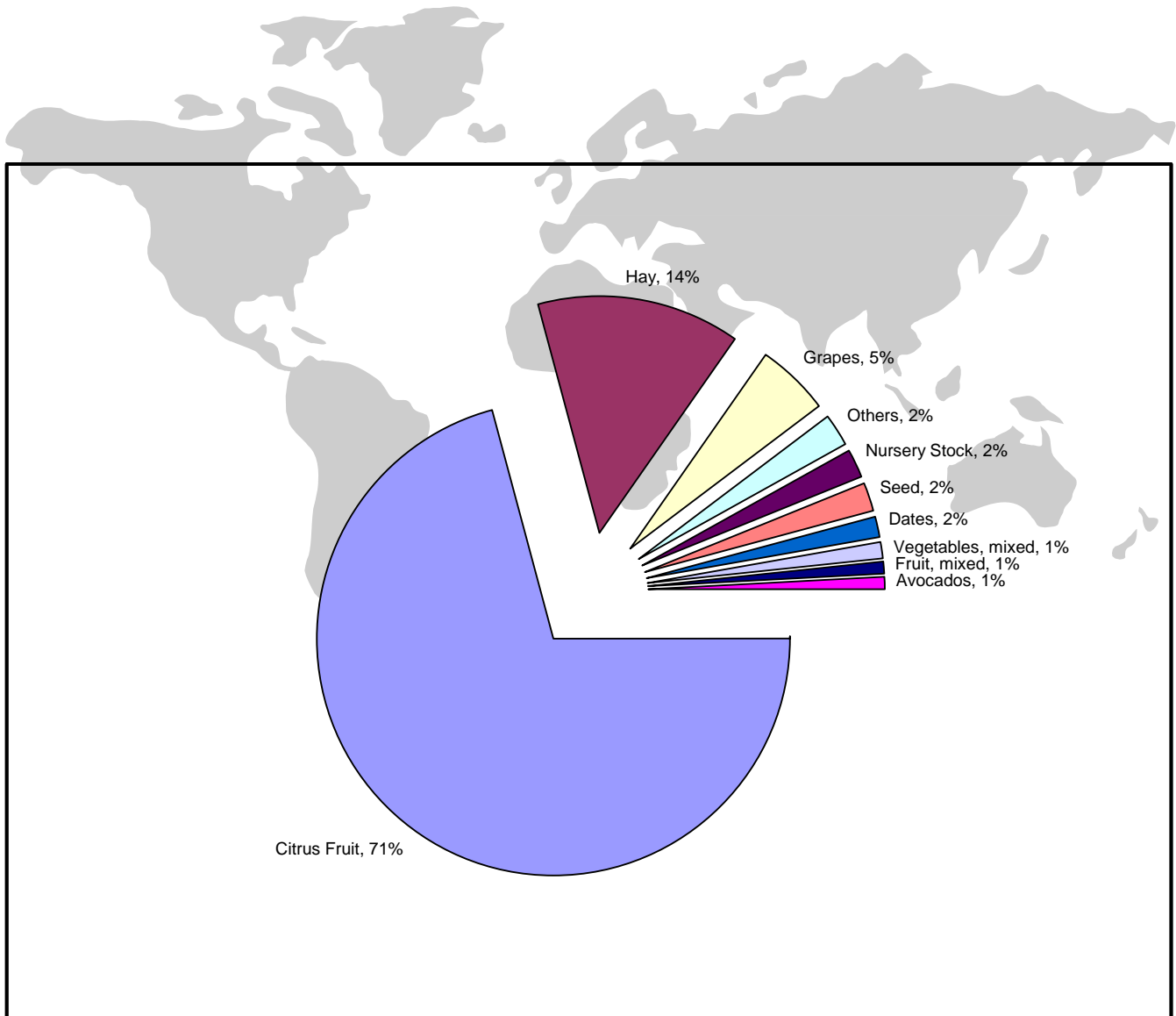
Argentina	El Salvador	Mozambique	Singapore
Australia	France	Netherlands	Slovakia
Bahamas	Germany	New Zealand	Spain
Bahrain	Greece	Nigeria	Sri Lanka
Bangladesh	Guatemala	Northern Marianas Islands	Switzerland
Belguim	Honduras	Oman	Taiwan
Bermuda	India	Panama	Thailand
Brazil	Indonesia	People's Rep. of China	Turkey
Burking Faso	Italy	Philippines	United Arab Emirates
Cambodia	Jamaica	Puerto Rico	United Kingdom
Canada	Japan	Qatar	Venezuela
Chile	Lebanon	Republic of Korea	Vietnam
Columbia	Malaysia	Russian Federation	
Costa Rica	Mexico	Saudi Arabia	
Dominican Republic	Micronesia	Senegal	



# PHYTOSANITARY EXPORT CERTIFICATION – 2008

## All Commodities Certified

Artichokes	Citrus Fruit	Hay	Potatoes
Avocado Budwood	Citrus Pollen	Mangos	Raisins
Avocados	Citrus Seed	Melons	Seed
Cantaloupe	Corn, processed	Mixed Fruit	Tomatoes
Celery	Cottonseed	Nursery Stock	Vegetables, mixed
Citrus Budwood	Dates	Pepper Seed	
	Grapes	Peppers	



# SUSTAINABLE AGRICULTURE - 2008

## ORGANIC FARMING

120 Organic producers registered in Riverside County.

### PEST DETECTION (Commercial and Urban)

<u>Activity</u>	<u>Hours</u>
Commercial Crops	266.5
Public Contact	223.5
Special Surveys:	
Tristeza (Residential)	23.0
Other	39.0
Red Imported Fire Ant	29.5

<u>Citrus Tristeza Indexing (Coachella Valley)</u>	<u>Numbers</u>
Commercial	
Properties tested	11
Acres sampled	110.5
Samples tested biochemically	646
“Positive” samples	0
Residential	
Properties tested	0
Trees surveyed	0
Samples tested biochemically	0
“Positive” samples	0

### PEST DETECTION (Exotic Insects)

<u>Pest</u>	<u>Trap Servicings</u>
European Corn Borer	122
Gypsy Moth	74
Khapra Beetle	51
Asian Citrus Psyllid	103

### PEST EXCLUSION (Incoming plant shipments)

<u>Units profiled</u>	<u>Units inspected</u>	<u>Rejections</u>
109,142	51,742	179

### PEST ABATEMENT/ HOLD NOTICES

<u>Pest</u>	<u>Properties</u>
California Red Scale	2
Sting Nematode	6
Citrus Tristeza Virus	0
Glassy-Winged Sharpshooter	0
Abandoned Orchards/Vineyards	0

## BIOLOGICAL CONTROL OF WEEDS

<u>Pest</u>	<u>Control Agent</u>
Yellow Starthistle	<i>Bangasternus orientalis</i> (weevil)
	<i>Eustenopus villosus</i> (weevil)
Puncture Vine	<i>Microlarinus lareynii</i> (weevil)
	<i>Microlarinus lypriformis</i> (weevil)

## BIOLOGICAL CONTROL OF INSECTS AND SNAILS

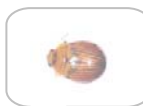
<u>Pest</u>	<u>Control Agent</u>
Ash Whitefly	<i>Encarsia arthenopea</i> (wasp)
Black Scale	<i>Metaphycus helvolus</i> (wasp)
Brown Soft Scale	<i>Metaphycus luteolus</i> (wasp)
California Red Scale	<i>Aphytis melinus</i> (wasp)
Citrus Mealybug	<i>Cryptolaemus montrouzieri</i> (beetle)
Cottony Cushion Scale	<i>Encarsia sp.</i> (wasp)
	<i>Cryptochaetum iceryae</i> (fly)
Eucalyptus	<i>Avetianella longoi</i> (wasp)
Long-horned Borer	<i>Jarra phoracantha</i> (wasp)
	<i>Syngaster lepidus</i> (wasp)
Mosquitoes	<i>Bacillus thur. israelensis</i> (bacterium)
	<i>Gambusia affinis</i> (fish)
Olive Fruit Fly	<i>Psytalia concolor</i> (wasp)
Persea Mite	<i>Galendromus annectens</i> (pred. mite)
	<i>Galendromus helveolus</i> (pred. mite)
	<i>Galendromus pilosus</i> (pred. mite)
	<i>Psyllaephagus bliteus</i> (wasp)
Red Gum Lerp	
Psyllid	
Red Imported Fire Ant	<i>Beauveria bassiana</i> (fungus)
	<i>Pseudacteon tricuspis</i> (fly)
Two Spotted Spider Mite	<i>Phytoseiulus persimilis</i> (pred. mite)
	<i>Galendromus occidentalis</i> (pred. mite)
Vine Mealybug	<i>Cryptolaemus montrouzieri</i> (beetle)
Western Grapeleaf Skeletonizer	<i>Ametadoria harrisinae</i> (parasitoid)
	<i>Apanteles harrisinae</i> (wasp)
Woolly Whitefly	<i>Amitus spiniferus</i> (parasitoid)
	<i>Cales noacki</i> (parasitoid)
Brown Garden Snail	<i>Rumina decollate</i> (pred. snail)

## OTHER

Enforcement of County Ordinances to control Lettuce Mosaic Virus, Agricultural Grading, Land Application of Manure and Biosolids, Cotton Plowdown, Blowing Dust, and Beekeeping.

## 2008 Pest Interceptions

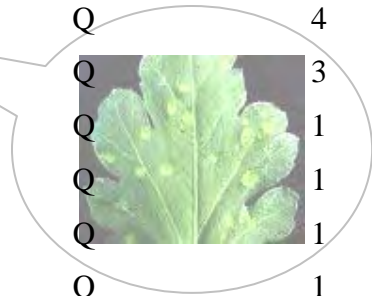
Scientific Name	Common Name (If any)	Pest Rating	# of Interceptions
<i>Fusarium oxysporum</i>	Palm Wilt Disease	A	33
<i>Parlatoria blanchardi</i>	Date Scale	A	3
<i>Pseudaulacaspis cockerelli</i>	Magnolia White Scale	A	3
<i>Solenopsis invicta</i>	Red Imported Fire Ant	A	3
<i>Hemiberlesia palmae</i>	Dark-spotted Scale	A	2
<i>Peganum harmala</i>	Harmel	A	2
<i>Pinnaspis strachani</i>	Lesser Snow Scale	A	2
<i>Aonidiella orientalis</i>	Oriental Scale	A	1
<i>Bactrocera oleae</i>	Olive Fruit Fly	A	1
<i>Ceroplastes rubens</i>	Red Wax Scale	A	1
<i>Ceroplastes rusci</i>	Fig Wax Scale	A	1
<i>Cuscuta sp.</i>	Dodder	A	1
<i>Darna pallivitta</i>	A Moth	A	1
<i>Genus unidentified</i>	Unidentifiable	A	1
<i>Maconellicoccus hirsutus</i>	Hibiscus Mealybug	A	1
<i>Paropeas sp.</i>	A Snail	A	1
<i>Pinnaspis buxi</i>	Boxwood Scale	A	1
<i>Aegilops cylindrica</i>	Jointed Goatgrass	B	12
<i>Bradybaena similaris</i>	Asian Tramp Snail	B	11
<i>Homalodisca vitripennis</i>	Glassy-Winged Sharpshooter	B	4
<i>Aonidiella aurantii</i>	California Red Scale	B	3
<i>Elytrigia repens</i>	Quackgrass	B	2
<i>Tamarix sp.</i>	Salt Cedar	B	2
<i>Ambrosia trifida</i>	Giant Ragweed	B	1
<i>Bupleurum rotundifolium</i>	Hare's Ear	B	1
<i>Cyperus rotundus</i>	Purple Nutsedge	B	1
<i>Lepidosaphes beckii</i>	Purple Scale	B	1
<i>Trachymela sloanei</i>	Eucalyptus Leaf Beetle	B	1





## 2008 Pest Interceptions

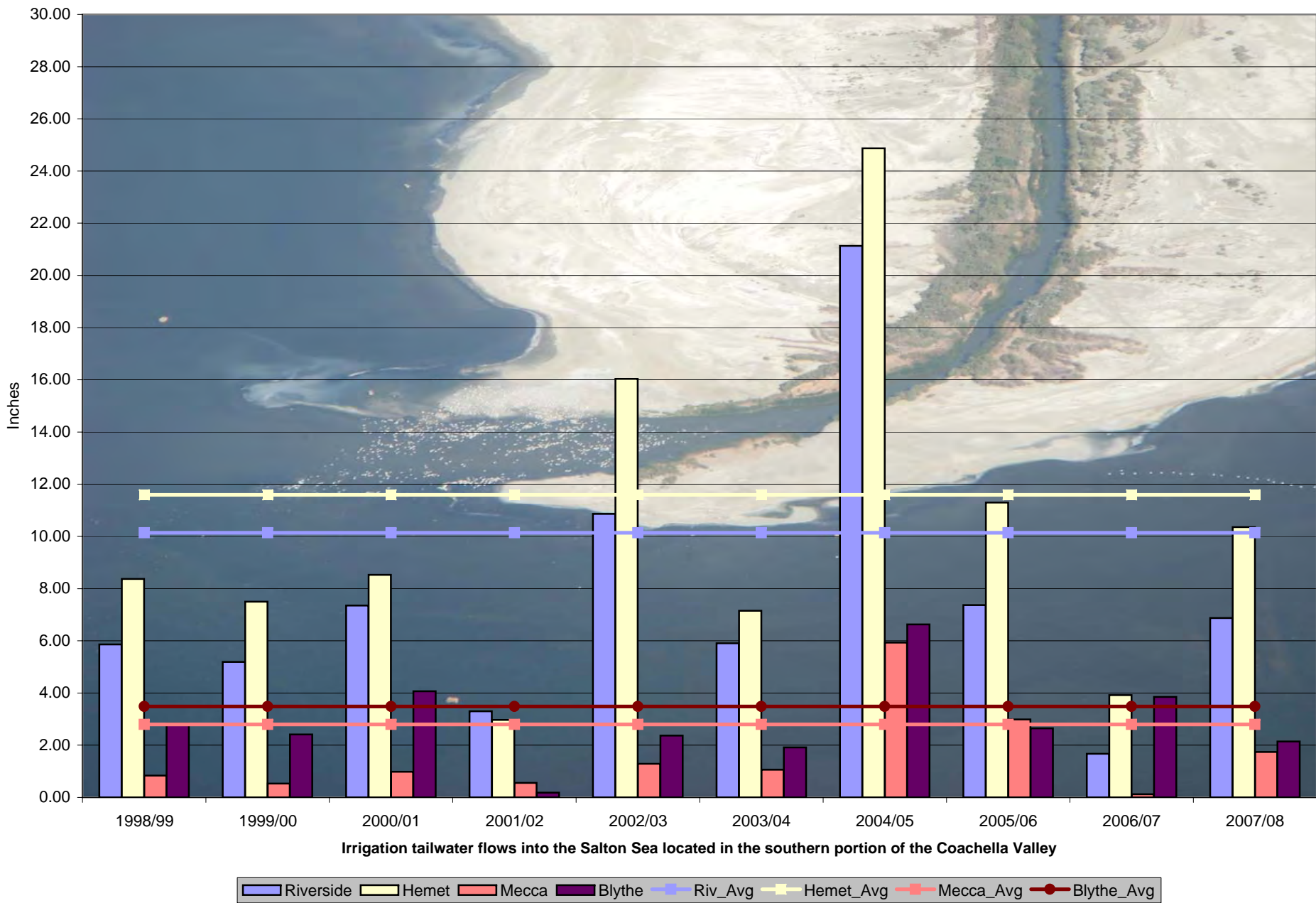
<i>Genus unidentified</i>	Unidentifiable	Q	12
<i>Puccinia horiana</i>	Chrysanthemum White Rust	Q	4
<i>Klambothrips myopori</i>	A Thrip	Q	3
<i>Aleurodicus dispersus</i>	Spiralling White Fly	Q	1
<i>Aleurotrachelus sp.</i>	A White Fly	Q	1
<i>Asphodelus fistulosus</i>	Onionweed	Q	1
<i>Digitaria ciliaris</i>	Southern Crabgrass	Q	1
<i>Fiorinia sp.</i>	A Scale	Q	1
<i>Hemiberlesia sp.</i>	An Armored Scale	Q	1
<i>Ischaemum rugosum</i>	Wrinkled Duck-beak	Q	1
<i>Kyllinga sp.</i>	A Sedge	Q	1
<i>Milviscutulus mangiferae</i>	Mango Shield Scale	Q	1
<i>Monomorium sp.</i>	An Ant	Q	1
<i>Prococcus acutissimus</i>	Slender Soft Scale	Q	1
<i>Ripersiella hibisci</i>	Root Mealybug	Q	1
<i>Technomyrmex albipes</i>	White Footed Ant	Q	1
Virus	Tomato Yellow Leaf Curl	Q	1
<i>Zachrysia provisoria</i>	A Snail	Q	1



## Pest Interceptions – Summary 2006 thru 2008

Year	Total	A	B	Q
2008	131	58	39	34
2007	72	7	22	43
2006	93	13	36	44

## Rainfall Amounts throughout Riverside County - Last 10 Years plus Historical Averages



## Water Crisis – Recent News Stories

- Water picture gets worse – California Farmer, Jan 2009
- Water crisis hits economy – California Farmer, Feb 2009
- Valley farmers curb planting to cope with drought – Fresno Bee, 1/22/09
- Drought-hit California farmers abandoning vegetable fields – The Associated Press, 1/26/09
- California drought makes tough times for farmers – The AP, 1/25/09
- Government's deal new blow to drought-stricken California farmers – The NY Times, 2/22/09
- Drought adds to hardships in California – The NY Times, 2/22/09
- Central Valley farmers told no water will be delivered this year – Press-Enterprise, 2/20/09
- Recent storms not enough to replenish water supply amid drought – Press-Enterprise, 2/18/09
- Drought tops agenda for State Board of Food and Agriculture – CDFA News Release, 2/19/09
- California water crisis battle continues to erupt on many fronts – Western Farm Press, 2/21/09
- Schwarzenegger declares California drought emergency – AP, 2/27/09
- Avocado, citrus may be on the way out – North County Times, 3/1/09
- Water shortage causes crop shifts – California Farmer, July 2008
- Low water spurs high anxiety – California Farmer, April 2009
- Water worries weigh on farmers – Press-Enterprise, 3/22/09
- Farmers, water officials discuss cutbacks for western Riverside County – Press-Enterprise, 11/20/07
- San Diego County farmers brace for possible water cuts – KGTV, 3/3/09
- Experts warn California faces water catastrophe – AgAlert, 7/23/08
- Water shortages threaten farms' future – AgAlert, 8/20/08
- California's water future: Crops wither—along with the water supply – AgAlert, 6/18/08
- Stumped trees leave a stark reminder of water shortages – AgAlert, 8/13/08
- Shortage of water forces tough decisions – AgAlert, 9/3/08
- Drought, water shortages force ranchers to downsize – AgAlert, 9/17/08
- Dry January worsens state's water shortages – AgAlert, 1/28/09
- Water-related job losses could total 40,000 plus, UC estimates – AgAlert, 1/28/09
- Farmers constantly seek more 'crop per drop' – AgAlert, 2/18/09
- Lack of water leads to more land fallowing – AgAlert, 3/4/09
- Likelihood of no water alarms CVP farmers – AgAlert, 2/25/09
- Governor orders state to address drought emergency – AgAlert, 3/4/09
- Updated allocations show severe water shortages will remain – AgAlert, 3/25/09
- Legislators introduce five different bonds addressing water needs – AgAlert, 3/18/09
- Updated UC report shows water cuts will cause severe harm – AgAlert, 2/25/09
- Federal salmon trial continues in Fresno – AgAlert, 6/18/08
- Imperial farmers deal with similar water challenges – AgAlert, 6/25/08
- Rancho California Water District adopts a local reduction plan fro agricultural customers – RCWD News Release, 11/8/07
- Water agency to slash supply, will cut deliveries 10 percent – Press-Enterprise, 4/15/09
- The water crisis worsens – now what? – California Fresh Fruit and Raisin News, April 2009
- California farmers fallow thousands of acres due to water crisis – FB News, 4/6/09
- Feds to release minimal water supplies to farms – The Associated Press, 4/21/09
- State Senator Abel Maldonado says number one issue facing California is water – Western Farm Press, 3/19/09



Turf farm in the Coachella Valley



Turf farm in San Jacinto



Turf farm in San Jacinto



Sprinkler irrigation for turf farm in San Jacinto



Dairy forage field in San Jacinto



Table Grapes in the Coachella Valley



Canal overlooking Citrus in the Coachella Valley



Coachella Canal



Palo Verde Diversion Dam diverts water from the Colorado River to the Palo Verde Irrigation District to supply water for 121,000 acres of valley and mesa lands.

# STAFF MEMBERS – 2008

## **Agricultural Commissioner/Sealer of Weights and Measures**

John Snyder

## **Executive Assistant**

Patrice Wyatt

## **Assistant Agricultural Commissioner/Sealer of Weights and Measures**

G. Dustin Wiley

## **Deputy Agricultural Commissioner/Sealers**

Ron Bray	Renee Reid
Robert Mulherin	Bill Tracy
Bill Oesterlein	

## **Supervising Agricultural & Standards Investigators**

Don Domenigoni	Suzanne Nickau
Erin Freeman	Keith Selnick
Dean Gottlieb	

## **Agricultural & Standards Investigators**

Terry Allen	Andrea Dillon	Ting Hsiung	Janice Mattson
Rick Allert	Kevin Doi	Delia Jiminez-Cioc	Dennis Miller
Megan Barron	Dia Elseewi	Carol Kreger	Michelle Millunzi
Dennis Blackman	Tom Finan	Charles Kregl	Victor Miranda
Lena Canada	Julius Francisco	Mike Lahti	Jose Quintero
Lucy Candelario	Gabriel Gowman	Brian Larson	Richard Shaffer
Javier Chacon, Jr.	Charles Hardesty	Jeremy Larson	Hugo Soto
Jennifer Chandler	James Hayashi	Arturo Lomeli	Andria Thomas
Ven Chien	Tom Hought	Harry Loukatos	Michele Tracy
Courtney Cooper			Tom Vizthum

## **Weights and Measures Inspectors**

Steve Bennett  
Doug Simmons

## **Agricultural Inspector**

Mike Dishman

## **Clerical Support Staff**

Kelly Briggs	Cynthia Ramos
Emerson Leavitt	Veronica Sanchez
Elisa Monteil	Toinye Williams

Riverside County  
Agricultural Commissioner  
PO Box 1089  
Riverside, CA 92502-1089



Aerial view of Skinner Reservoir (foreground) and Diamond Valley Lake