



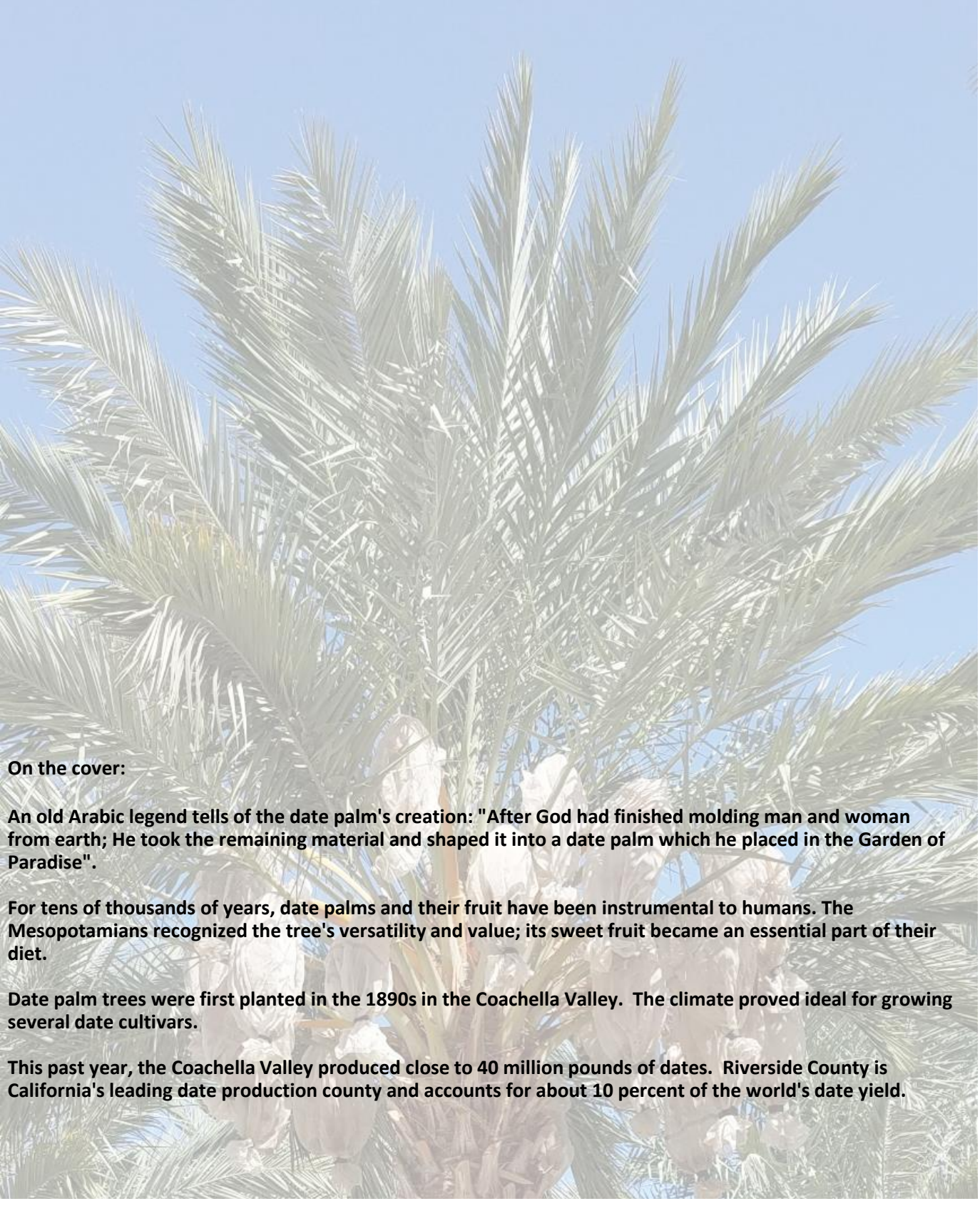
# **RIVERSIDE COUNTY**

## **AGRICULTURAL PRODUCTION REPORT**

### **2016**

**[rivcoag.org](http://rivcoag.org)**  
**[agtrail.rivcoca.org](http://agtrail.rivcoca.org)**





**On the cover:**

**An old Arabic legend tells of the date palm's creation: "After God had finished molding man and woman from earth; He took the remaining material and shaped it into a date palm which he placed in the Garden of Paradise".**

**For tens of thousands of years, date palms and their fruit have been instrumental to humans. The Mesopotamians recognized the tree's versatility and value; its sweet fruit became an essential part of their diet.**

**Date palm trees were first planted in the 1890s in the Coachella Valley. The climate proved ideal for growing several date cultivars.**

**This past year, the Coachella Valley produced close to 40 million pounds of dates. Riverside County is California's leading date production county and accounts for about 10 percent of the world's date yield.**



# CONTENTS

---

1	COMMODITY GROUP VALUES
2	LEADING COMMODITIES
3	PRODUCTION VALUATION CHANGES 2015 - 2016
4	CITRUS CROPS
5	TREE AND VINE CROPS
6 - 7	VEGETABLE, MELON AND MISCELLANEOUS CROPS
8 - 9	FIELD AND SEED CROPS
10	LIVESTOCK AND POULTRY
10	LIVESTOCK AND POULTRY PRODUCTS
10	AQUACULTURE
11	NURSERY STOCK PRODUCTION
11	APICULTURE
12	DISTRICT VALUATIONS
13	CALIFORNIA'S LEADING AGRICULTURAL COUNTIES 2014 - 2015
13	RIVERSIDE COUNTY AGRICULTURAL PRODUCTION VALUES 2007 - 2016
14 - 15	PHYTOSANITARY EXPORT CERTIFICATION SUMMARY
16 - 17	RIVERSIDE COUNTY PEST INTERCEPTIONS
18	SUSTAINABLE AGRICULTURE REPORTS

## AGRICULTURAL COMMISSIONER'S OFFICE

### **Agricultural Commissioner / Sealer of Weights and Measures**

Ruben J. Arroyo

### **Executive Assistant**

Patrice Wyatt

### **Assistant Agricultural Commissioner / Sealer of Weights and Measures**

Ronald Bray

### **Deputy Agricultural Commissioner / Sealer**

Robert Mulherin, Delia Jimenez-Cioc, Carmen Haines, Michele Tracy

### **Supervising Agricultural & Standards Investigators**

Harry Loukatos, Hugo Soto, Daniel Delgado, Gabriel Gowman, Tom Finan

### **Agricultural & Standards Investigators**

Marissa Bales, Courtney Cooper, Anthony Dahlan, Kevin Doi, Jim Donnelly, Eric Downs, Jacquelyne Drainville, Vanessa Frey, Kevin Gallego, Charles Hardesty, Stephanie Hernandez, Charles Hooper, Stephanie Hsiung, Jordan Key, Brian Larson, Jason Ledbetter, Sarah Mellor, Victor Miranda, Juan Montes, Brian Moreno, Sean Nabavi, Diana Nguyen, Brian Pennington, Linnea Postuma, Juanita Rios, Machaya Rodpai, Lorraine Shinnette, Celia Sosa, Stephen Triplett, David Womack, Ron Wymore

### **Weights and Measures Inspectors**

Steve Bennett, Doug Simmons

### **Clerical Support Staff**

Kelly Briggs, Cynthia Ramos, Tara Buffington, Veronica Sanchez, Elisa Montiel



**RUBEN J. ARROYO**  
AGRICULTURAL COMMISSIONER  
SEALER OF WEIGHTS AND MEASURES

# RIVERSIDE COUNTY AGRICULTURAL COMMISSIONER'S OFFICE

**RONALD BRAY**  
ASSISTANT AGRICULTURAL COMMISSIONER / SEALER  
**ROBERT MULHERIN**  
DEPUTY AGRICULTURAL COMMISSIONER / SEALER  
**DELIA JIMENEZ-CIOC**  
DEPUTY AGRICULTURAL COMMISSIONER / SEALER  
**MICHELE TRACY**  
DEPUTY AGRICULTURAL COMMISSIONER / SEALER  
**CARMEN HAINES**  
DEPUTY AGRICULTURAL COMMISSIONER / SEALER

Karen Ross, Secretary  
California Department of Food and Agriculture

The Honorable Board of Supervisors of Riverside County

John Tavaglione, Chairman, District 2

Kevin Jeffries, District 1

V. Manuel Perez, District 4

Chuck Washington, District 3

Marion Ashley, District 5

It is with great pleasure that I present the 2016 Riverside County Agricultural Production Report. This report is produced in accordance with Section 2279 of the California Food and Agricultural Code, and summarizes the acreage, production and valuation of Riverside County's agricultural commodities.

This year's report represents a total gross value of **\$1,275,776,000**. This total represents a decrease of \$25.8 million (2.0%) from last year's total value. The largest decline was seen in Field Crops, primarily wheat and hay. Grain production in the Palo Verde Valley has been affected by increased fallowing and fluctuating commodity markets. Milk and egg prices and production also fell from last year's totals. Citrus and vegetables enjoyed fairly significant increases in value while Nursery values were slightly down.

Based on historical models, Riverside County's 2016 agricultural production contributed nearly four billion dollars to the regional economy when indirect and induced economic impacts are considered.

A key factor in Riverside County's agricultural strength is in the diversity of crops produced. This is especially important as producers contend with fluctuating climate and weather patterns. Our 2016 report includes more than 120 different commodities, forty-nine of which have a gross value in excess of \$1,000,000. Despite the multitude of challenges faced by agriculturalists in 2016, Riverside County exported high-quality food and fiber to more than 50 countries worldwide.

Crop values vary from year to year based on production, market fluctuations and weather. It must be emphasized that this report reflects a gross return only and in no way represents a measure of profit or loss to producers. Growers do not have control over most input costs, such as fuel, fertilizers and packaging, nor can they significantly affect market prices.

This report is our yearly opportunity to recognize the growers, shippers, ranchers and other businesses instrumental to and supportive of agriculture in Riverside County. As such, I would like to extend my thanks to the industry for their continued efforts in providing the vital information that enables the compilation of this report.

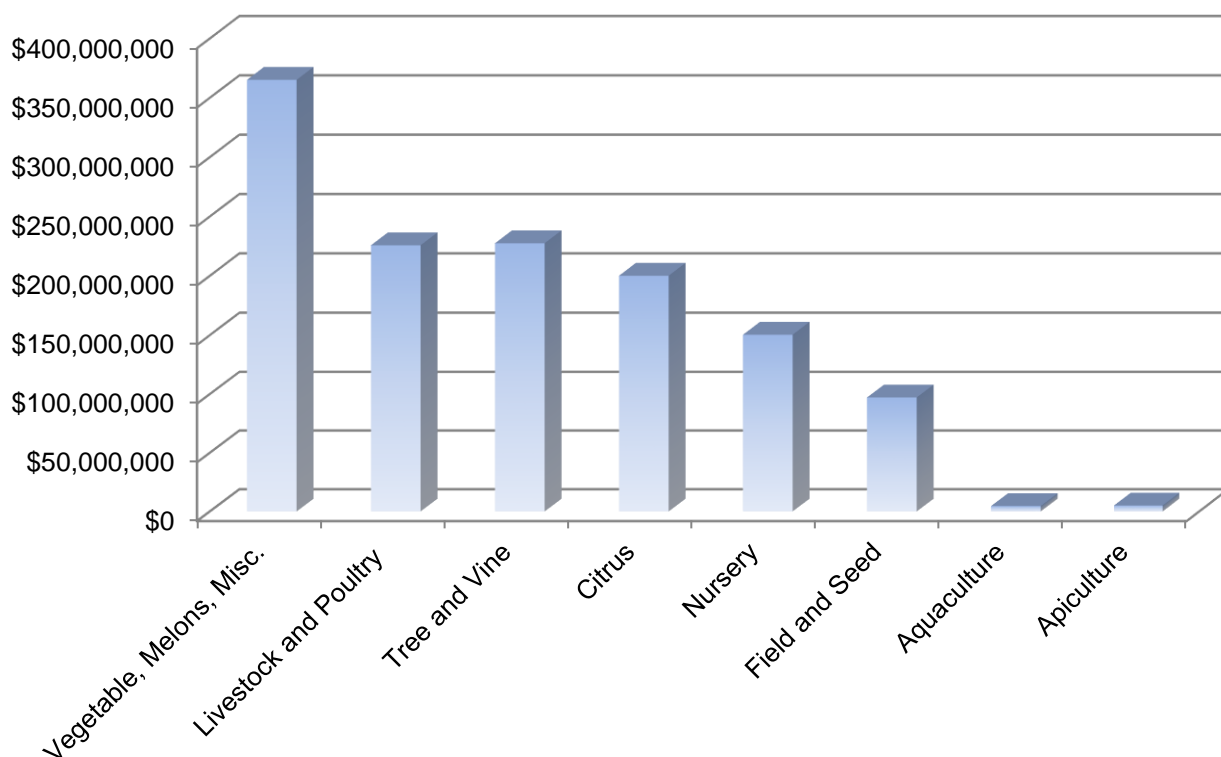
Respectfully submitted,

Ruben J. Arroyo  
Agricultural Commissioner  
Sealer of Weights and Measures

## FIVE YEAR COMPARISON

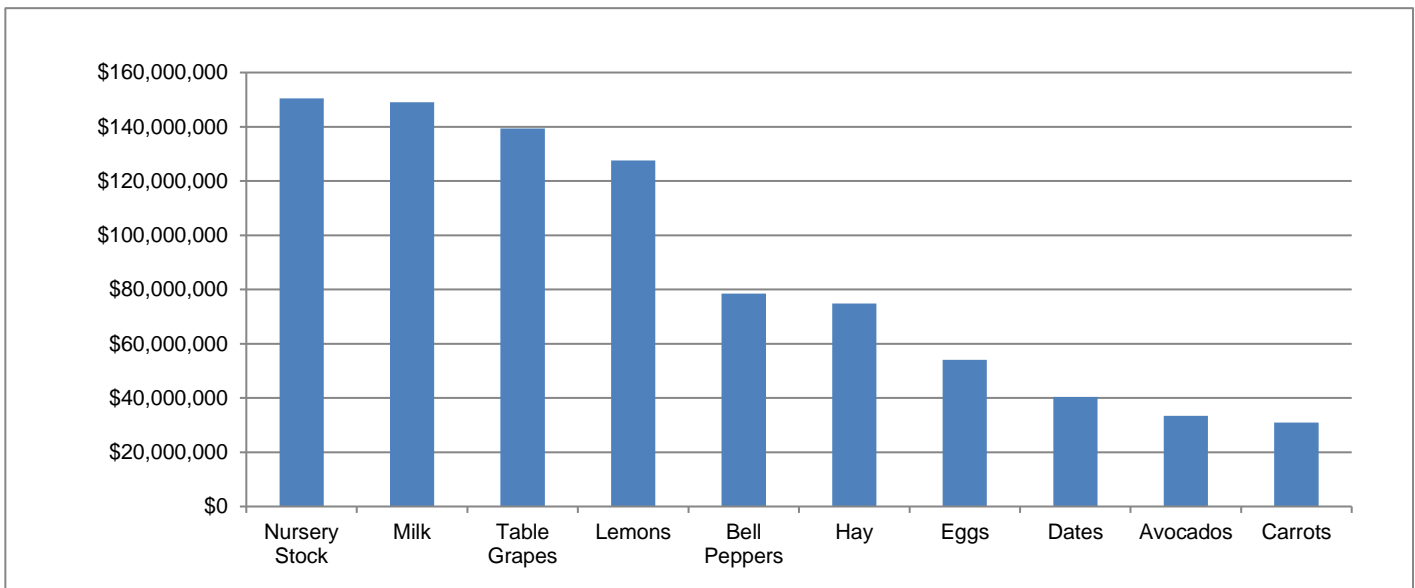
Commodity Group	2012	2013	2014	2015	2016
Citrus	\$125,711,000	\$142,404,000	\$170,891,000	\$187,673,000	\$200,101,000
Tree and Vine	\$217,214,000	\$232,536,000	\$223,593,000	\$234,928,000	\$227,444,000
Vegetable, Melons, Misc.	\$286,234,000	\$340,407,000	\$337,404,000	\$327,199,000	\$365,157,000
Field and Seed	\$147,352,000	\$154,582,000	\$156,575,000	\$122,794,000	\$97,184,000
Nursery	\$190,878,000	\$191,215,000	\$172,910,000	\$158,648,000	\$150,426,000
Apiculture	\$4,983,000	\$4,715,000	\$4,819,000	\$4,897,000	\$5,082,000
Aquaculture	\$4,205,000	\$2,262,000	\$5,078,000	\$5,397,000	\$4,624,000
Livestock and Poultry	\$276,553,000	\$259,683,000	\$290,746,000	\$260,015,000	\$225,758,000
<b>GRAND TOTAL</b>	<b>\$1,253,130,000</b>	<b>\$1,327,804,000</b>	<b>\$1,362,016,000</b>	<b>\$1,301,551,000</b>	<b>\$1,275,776,000</b>

## 2016 COMMODITY GROUP VALUES



# TEN LEADING CROPS FOR 2016

Rank	Crop	Value
1st	Nursery Stock	\$150,426,000
2nd	Milk	149,019,000
3rd	Table Grapes	139,319,000
4th	Lemons	127,601,000
5th	Bell Peppers	78,470,000
6th	Hay	74,894,000
7th	Eggs	54,089,000
8th	Dates	40,347,000
9th	Avocados	33,392,000
10th	Carrots	30,975,000



## OTHER MILLION DOLLAR CROPS

Crop	Value	Crop	Value	Crop	Value
Grapefruit	28,986,000	Cauliflower	10,980,000	Strawberries	6,200,000
Broccoli	23,621,000	Garlic	10,395,000	Lettuce - Head	5,532,000
Mandarins / Tangerines	20,939,000	Silage	9,634,000	Tangelos	4,119,000
Watermelon	19,982,000	Grapes - Wine	9,604,000	Tomatoes	3,854,000
Asian Vegetables	19,351,000	Artichokes	9,371,000	Squash	3,678,000
Cattle and Calves	18,370,000	Navel Oranges	9,295,000	Pollination	3,647,000
Mixed Melons	17,099,000	Cotton	8,713,000	Talapia	3,506,000
Honeydew Melons	13,378,000	Celery	8,058,000	Valencia Orange	3,342,000
Romane Lettuce	12,712,000	Lettuce - Leaf	7,487,000	Wheat - Grain	2,701,000
Potatoes	12,202,000	Beans - Green	7,120,000	Onion - Dry	2,538,000
Cantaloupe	11,886,000	Spinach	6,970,000	Cabbage	2,379,000
Corn - Sweet	11,181,000	Eggplant	6,565,000	Honey	1,397,000
Okra	11,072,000	Spices/Herbs	6,221,000	Sheep and Lamb	1,374,000

## PRODUCTION VALUATION CHANGES 2015 TO 2016

<u>Crop</u>	<u>2016</u>	<u>2015</u>	<u>Value Change (\$)</u>	<u>Percentage Change</u>
Citrus	200,101,000	187,673,000	12,428,000	6.6%
Tree and Vine	227,444,000	234,928,000	(7,484,000)	-3.2%
Vegetables	365,157,000	327,199,000	37,958,000	11.6%
Field and Seed	97,184,000	122,794,000	(25,610,000)	-20.9%
Nursery	150,426,000	158,648,000	(8,222,000)	-5.2%
Apiculture	5,082,000	4,897,000	185,000	3.8%
Aquaculture	4,624,000	5,397,000	(773,000)	-14.3%
All Agriculture	1,050,018,000	1,041,536,000	8,482,000	0.8%
Livestock and Poultry	225,758,000	260,015,000	(34,257,000)	-13.2%
<b>Grand Total</b>	<b>1,275,776,000</b>	<b>1,301,551,000</b>	<b>(25,775,000)</b>	<b>-2.0%</b>





## CITRUS CROPS

	Year	Planted Acreage	Harvested Acreage	Production		Unit	Value	
				Per Acre	Total		Per Unit	Total
<b>Grapefruit-Red</b>	<b>2016</b>	<b>1,237</b>	<b>1,237</b>	<b>15.63</b>	<b>19,300</b>	<b>tons</b>	<b>567.82</b>	<b>10,959,000</b>
<b>By-Products</b>	<b>2016</b>			<b>2.56</b>	<b>3,170</b>	<b>tons</b>	<b>59.38</b>	<b>188,000</b>
Grapefruit-Red	2015	1,336	1,336	14.49	19,400	tons	477.92	9,272,000
By-Products	2015			2.65	3,540	tons	59.72	211,000
<b>Grapefruit-Ruby</b>	<b>2016</b>	<b>2,833</b>	<b>2,833</b>	<b>10.87</b>	<b>30,800</b>	<b>tons</b>	<b>533.15</b>	<b>16,421,000</b>
<b>By-Products</b>	<b>2016</b>			<b>2.50</b>	<b>7,080</b>	<b>tons</b>	<b>61.89</b>	<b>438,000</b>
Grapefruit-Ruby	2015	3,003	3,003	14.81	44,500	tons	361.36	16,081,000
By-Products	2015			2.51	7,540	tons	61.94	467,000
<b>Grapefruit-Other</b>	<b>2016</b>	<b>130</b>	<b>130</b>	<b>14.72</b>	<b>1,910</b>	<b>tons</b>	<b>504.92</b>	<b>964,000</b>
<b>By-Products</b>	<b>2016</b>			<b>1.84</b>	<b>239</b>	<b>tons</b>	<b>68.67</b>	<b>16,400</b>
Grapefruit-Other	2015	135	135	14.19	1,920	tons	475.14	912,000
By-Products	2015			2.14	289	tons	38.72	11,200
<b>Lemons</b>	<b>2016</b>	<b>6,382</b>	<b>6,382</b>	<b>15.82</b>	<b>101,000</b>	<b>tons</b>	<b>1,249.80</b>	<b>126,230,000</b>
<b>By-Products</b>	<b>2016</b>			<b>2.29</b>	<b>14,600</b>	<b>tons</b>	<b>93.91</b>	<b>1,371,000</b>
Lemons	2015	6,442	6,442	15.81	101,800	tons	1,184.25	120,557,000
By-Products	2015			2.39	15,400	tons	91.87	1,415,000
<b>Miscellaneous*</b>	<b>2016</b>	<b>442</b>	<b>442</b>	<b>9.56</b>	<b>4,230</b>	<b>tons</b>	<b>1,375.57</b>	<b>5,819,000</b>
Miscellaneous*	2015	471	471	8.86	4,170	tons	1,309.18	5,459,000
<b>Oranges-Navel</b>	<b>2016</b>	<b>1,586</b>	<b>1,586</b>	<b>11.79</b>	<b>18,700</b>	<b>tons</b>	<b>358.71</b>	<b>6,708,000</b>
<b>By-Products</b>	<b>2016</b>			<b>7.04</b>	<b>11,170</b>	<b>tons</b>	<b>231.59</b>	<b>2,587,000</b>
Oranges-Navel	2015	1,470	1,470	11.68	17,200	tons	333.30	5,733,000
By-Products	2015			4.86	7,140	tons	46.87	335,000
<b>Oranges-Valencia</b>	<b>2016</b>	<b>1,049</b>	<b>1,049</b>	<b>9.24</b>	<b>9,700</b>	<b>tons</b>	<b>329.13</b>	<b>3,193,000</b>
<b>By-Products</b>	<b>2016</b>			<b>2.00</b>	<b>2,100</b>	<b>tons</b>	<b>70.98</b>	<b>149,000</b>
Oranges-Valencia	2015	1,205	1,205	9.29	11,200	tons	263.63	2,953,000
By-Products	2015			2.58	3,110	tons	70.89	220,000
<b>Mandarins / Tangerines</b>	<b>2016</b>	<b>1,611</b>	<b>1,611</b>	<b>7.91</b>	<b>12,700</b>	<b>tons</b>	<b>1,626.64</b>	<b>20,658,000</b>
<b>By-Products</b>	<b>2016</b>			<b>1.44</b>	<b>2,320</b>	<b>tons</b>	<b>121.11</b>	<b>281,000</b>
Mandarins / Tangerines	2015	1,616	1,616	7.51	12,100	tons	1,531.73	18,534,000
By-Products	2015			1.31	2,120	tons	115.36	245,000
<b>Tangelos</b>	<b>2016</b>	<b>532</b>	<b>532</b>	<b>8.15</b>	<b>4,340</b>	<b>tons</b>	<b>920.47</b>	<b>3,995,000</b>
<b>By-Products</b>	<b>2016</b>			<b>2.18</b>	<b>1,160</b>	<b>tons</b>	<b>106.67</b>	<b>124,000</b>
Tangelos	2015	784	784	7.13	5,590	tons	916.02	5,121,000
By-Products	2015			1.75	1,370	tons	107.25	147,000
<b>TOTAL</b>	<b>2016</b>	<b>15,802</b>	<b>15,802</b>					<b>200,101,000</b>
	2015	16,462	16,462					187,673,000

\* Includes: Kumquats, Limes, Blood Oranges.



# TREE AND VINE CROPS

	Year	Planted Acreage	Harvested Acreage	Production		Unit	Value	
				Per Acre	Total		Per Unit	Total
<b>Apples</b>	<b>2016</b>	<b>28</b>	<b>28</b>	<b>2.40</b>	<b>67</b>	<b>tons</b>	<b>1,910.00</b>	<b>128,000</b>
	2015	20	20	2.84	57	tons	1,516.50	86,400
<b>Apricots</b>	<b>2016</b>	<b>6</b>	<b>6</b>	<b>2.00</b>	<b>12</b>	<b>tons</b>	<b>1,988.00</b>	<b>23,900</b>
	2015	17	17	2.05	35	tons	1,453.50	50,900
<b>Avocados</b>	<b>2016</b>	<b>4,185</b>	<b>4,185</b>	<b>4.15</b>	<b>17,400</b>	<b>tons</b>	<b>1,919.09</b>	<b>33,392,000</b>
	2015	4,625	4,625	2.26	10,500	tons	2,433.22	25,549,000
<b>Cherries</b>	<b>2016</b>	<b>10</b>	<b>10</b>	<b>1.00</b>	<b>10</b>	<b>tons</b>	<b>3,680.00</b>	<b>37,000</b>
	2015	20	20	1.01	20	tons	4,500.00	90,000
<b>Dates</b>	<b>2016</b>	<b>7,964</b>	<b>7,964</b>	<b>2.40</b>	<b>19,100</b>	<b>tons</b>	<b>2,100.00</b>	<b>40,110,000</b>
<b>Culls</b>	<b>2016</b>			<b>0.35</b>	<b>2,790</b>	<b>tons</b>	<b>85.00</b>	<b>237,000</b>
Dates	2015	8,104	8,104	2.40	19,400	tons	2,100.00	40,740,000
Culls	2015			0.35	2,840	tons	85.00	241,000
<b>Grapes - Table*</b>	<b>2016</b>	<b>7,432</b>	<b>7,432</b>	Listed by Variety below.				<b>139,319,000</b>
<b>(Total)</b>	2015	7,026	7,026					143,988,000
<b>Beauty Seedless</b>	<b>2016</b>	<b>43</b>	<b>43</b>	<b>6.50</b>	<b>280</b>	<b>tons</b>	<b>2,666.67</b>	<b>747,000</b>
	2015	43	43	6.57	283	tons	2,666.67	755,000
<b>Exotic</b>	<b>2016</b>	<b>30</b>	<b>30</b>	<b>6.90</b>	<b>207</b>	<b>tons</b>	<b>2,111.11</b>	<b>437,000</b>
	2015	30	20	7.02	140	tons	2,111.11	296,000
<b>Flame Seedless</b>	<b>2016</b>	<b>3,050</b>	<b>3,050</b>	<b>9.60</b>	<b>29,300</b>	<b>tons</b>	<b>2,220.22</b>	<b>65,052,000</b>
	2015	3,434	3,434	9.72	33,400	tons	2,220.22	74,155,000
<b>Perlette</b>	<b>2016</b>	<b>65</b>	<b>65</b>	<b>7.45</b>	<b>484</b>	<b>tons</b>	<b>2,775.75</b>	<b>1,343,000</b>
	2015	75	75	7.56	567	tons	2,888.88	1,638,000
<b>Thompson Seedless</b>	<b>2016</b>	<b>60</b>	<b>60</b>	<b>6.55</b>	<b>393</b>	<b>tons</b>	<b>2,888.88</b>	<b>1,135,000</b>
	2015	70	70	6.57	460	tons	2,777.78	1,278,000
<b>Other Varieties</b>	<b>2016</b>	<b>4,184</b>	<b>4,184</b>	<b>6.33</b>	<b>26,500</b>	<b>tons</b>	<b>2,664.33</b>	<b>70,605,000</b>
	2015	3,384	3,384	6.75	22,800	tons	2,888.88	65,866,000
<b>Grapes - Wine</b>	<b>2016</b>	<b>2,630</b>	<b>2,630</b>	<b>2.09</b>	<b>5,500</b>	<b>tons</b>	<b>1,746.27</b>	<b>9,604,000</b>
	2015	2,630	2,630	3.82	10,000	tons	1,363.85	13,639,000
<b>Miscellaneous**</b>	<b>2016</b>	<b>475</b>	<b>475</b>	<b>4.66</b>	<b>2,210</b>	<b>tons</b>	<b>1,983.39</b>	<b>4,383,000</b>
	2015	697	697	7.48	5,210	tons	1,671.71	8,710,000
<b>Peaches</b>	<b>2016</b>	<b>39</b>	<b>39</b>	<b>1.24</b>	<b>48</b>	<b>tons</b>	<b>1,995.15</b>	<b>96,000</b>
	2015	115	115	5.53	636	tons	2,719.18	1,729,000
<b>Pomegranates</b>	<b>2016</b>	<b>15</b>	<b>15</b>	<b>7.00</b>	<b>105</b>	<b>tons</b>	<b>1,090.00</b>	<b>114,000</b>
	2015	15	15	7.00	105	tons	1,000.00	105,000
<b>TOTAL</b>	<b>2016</b>	<b>22,784</b>	<b>22,784</b>					<b>227,444,000</b>
	2015	<b>23,269</b>	<b>23,269</b>					234,928,000

\* Harvested Acreage supplied by the California Desert Grape Administrative Committee.

\*\* Includes: Cherimoya, Figs, Jujube, Mangoes, Nectarines, Olives, Pears, Plums, Persimmons, Walnuts.

## VEGETABLE, MELON & MISCELLANEOUS CROPS

	Year	Harvested Acreage	Production		Unit	Value	
			Per Acre	Total		Per Unit	Total
<b>Artichokes</b>	<b>2016</b>	<b>855</b>	<b>8.05</b>	<b>6,880</b>	<b>tons</b>	<b>1,362.10</b>	<b>9,371,000</b>
	2015	884	8.04	7,110	tons	1,351.30	9,608,000
<b>Beans-Green</b>	<b>2016</b>	<b>771</b>	<b>5.67</b>	<b>4,370</b>	<b>tons</b>	<b>1,629.21</b>	<b>7,120,000</b>
	2015	1,223	5.40	6,600	tons	1,723.93	11,378,000
<b>Broccoli</b>	<b>2016</b>	<b>3,992</b>	<b>6.54</b>	<b>26,100</b>	<b>tons</b>	<b>905.00</b>	<b>23,621,000</b>
	2015	2,659	6.55	17,400	tons	900.46	15,668,000
<b>Cabbage</b>	<b>2016</b>	<b>327</b>	<b>9.50</b>	<b>3,110</b>	<b>tons</b>	<b>765.00</b>	<b>2,379,000</b>
	2015	58	7.50	435	tons	760.00	331,000
<b>Carrots</b>	<b>2016</b>	<b>5,237</b>	<b>33.88</b>	<b>177,000</b>	<b>tons</b>	<b>175.00</b>	<b>30,975,000</b>
	2015	4,570	34.00	155,000	tons	175.00	27,125,000
<b>Cauliflower</b>	<b>2016</b>	<b>1,417</b>	<b>7.75</b>	<b>10,980</b>	<b>tons</b>	<b>1,000.00</b>	<b>10,980,000</b>
	2015	1,134	7.29	8,270	tons	1,027.83	8,500,000
<b>Celery</b>	<b>2016</b>	<b>757</b>	<b>27.00</b>	<b>20,400</b>	<b>tons</b>	<b>395.00</b>	<b>8,058,000</b>
	2015	679	26.92	18,300	tons	406.25	7,434,000
<b>Corn-Sweet</b>	<b>2016</b>	<b>1,900</b>	<b>10.07</b>	<b>19,100</b>	<b>tons</b>	<b>585.37</b>	<b>11,181,000</b>
	2015	1,519	10.22	15,500	tons	565.85	8,771,000
<b>Eggplant</b>	<b>2016</b>	<b>314</b>	<b>22.00</b>	<b>6,910</b>	<b>tons</b>	<b>950.00</b>	<b>6,565,000</b>
	2015	220	18.90	4,160	tons	938.00	3,902,000
<b>Garlic</b>	<b>2016</b>	<b>1,628</b>	<b>6.08</b>	<b>9,900</b>	<b>tons</b>	<b>1,050.00</b>	<b>10,395,000</b>
	2015	788	6.10	4,810	tons	1,070.37	5,148,000
<b>Lettuce</b>							
<b>Head</b>	<b>2016</b>	<b>830</b>	<b>13.25</b>	<b>11,000</b>	<b>tons</b>	<b>502.89</b>	<b>5,532,000</b>
	2015	841	13.00	10,900	tons	396.91	4,326,000
<b>Loose Leaf</b>	<b>2016</b>	<b>847</b>	<b>11.47</b>	<b>9,700</b>	<b>tons</b>	<b>771.81</b>	<b>7,487,000</b>
	2015	879	11.41	10,000	tons	729.82	7,298,000
<b>Romaine</b>	<b>2016</b>	<b>1,630</b>	<b>13.00</b>	<b>21,200</b>	<b>tons</b>	<b>599.62</b>	<b>12,712,000</b>
	2015	2,041	12.90	26,300	tons	723.50	19,028,000
<b>Melons</b>							
<b>Cantaloupe</b>	<b>2016</b>	<b>2,224</b>	<b>12.63</b>	<b>28,100</b>	<b>tons</b>	<b>423.00</b>	<b>11,886,000</b>
	2015	1,047	12.66	13,300	tons	422.00	5,613,000
<b>Honeydew</b>	<b>2016</b>	<b>1,925</b>	<b>13.03</b>	<b>25,100</b>	<b>tons</b>	<b>533.00</b>	<b>13,378,000</b>
	2015	860	13.22	11,370	tons	533.10	6,061,000
<b>Mixed*</b>	<b>2016</b>	<b>2,800</b>	<b>13.13</b>	<b>36,800</b>	<b>tons</b>	<b>464.64</b>	<b>17,099,000</b>
	2015	638	10.83	6,900	tons	502.37	3,466,000

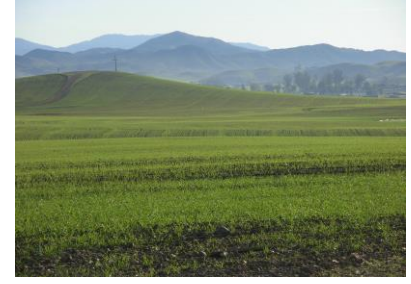
\* Includes: Casaba, Persian, Santa Claus, and Juan Canary.



## VEGETABLE, MELON & MISCELLANEOUS CROPS

	Year	Harvested Acreage	Production		Unit	Value	
			Per Acre	Total		Per Unit	Total
Melons							
Watermelon	2016	2,289	26.66	61,000	tons	327.57	19,982,000
	2015	1,523	28.05	42,700	tons	352.61	15,056,000
Miscellaneous**	2016	1,092	17.02	18,600	tons	272.62	5,071,000
	2015	1,574	12.66	19,900	tons	755.55	15,035,000
Okra	2016	643	6.45	4,150	tons	2,668.00	11,072,000
	2015	791	4.15	3,280	tons	1,000.00	3,280,000
Onion - Dry	2016	337	19.67	6,630	tons	382.86	2,538,000
	2015	127	22.99	2,920	tons	390.66	1,141,000
Oriental Vegetables	2016	3,095	9.19	28,400	tons	681.36	19,351,000
	2015	2,627	10.13	26,600	tons	746.84	19,866,000
Peppers							
Bell	2016	5,348	17.46	93,400	tons	840.15	78,470,000
	2015	4,644	17.85	82,900	tons	816.96	67,726,000
Potatoes							
Fall	2016	875	19.25	16,800	tons	250.00	4,200,000
	2015	875	19.30	16,900	tons	249.77	4,221,000
Spring	2016	2,841	9.47	26,900	tons	297.49	8,002,000
	2015	2,146	15.71	33,700	tons	309.67	10,436,000
Radishes	2016	101	7.50	760	tons	1,065.00	809,000
	2015	249	5.83	1,450	tons	1,371.43	1,989,000
Spices/Herbs	2016	1,556	7.99	12,430	tons	500.48	6,221,000
	2015	1,495	7.28	10,880	tons	1,368.77	14,892,000
Spinach	2016	504	8.50	4,300	tons	1,621.00	6,970,000
	2015	817	8.46	6,900	tons	1,339.01	9,239,000
Squash, All	2016	300	6.39	1,920	tons	1,915.50	3,678,000
	2015	468	11.42	5,340	tons	725.00	3,872,000
Strawberries	2016	152	21.33	3,200	tons	1,937.39	6,200,000
	2015	322	22.20	7,100	tons	1,867.16	13,257,000
Tomatoes	2016	347	18.29	6,350	tons	606.95	3,854,000
	2015	255	19.86	5,060	tons	698.00	3,532,000
TOTAL	2016	46,934					365,157,000
	2015	37,165					327,199,000

\*\* Includes: Amaranth, Arugula, Beets, Blueberries, Chinese Broccoli, Chinese Cabbage, Chives, Cilantro, Fennel, Garlic, Leeks, Butter Lettuce, Mint, Mushrooms, Mustard, Okra, Parsley, Radishes, Snow Peas, Chili Peppers, Pumpkins, Strawberries.



## FIELD AND SEED CROPS

	Year	Harvested Acreage	Production		Unit	Value	
			Per Acre	Total		Per Unit	Total
Cotton							
Short Staple	2016	4,278	1.30	5,560	tons	1,260.00	7,006,000
	2015	4,411	1.28	5,650	tons	1,260.00	7,119,000
Seed	2016		1.60	6,800	tons	251.00	1,707,000
	2015		1.67	7,400	tons	251.00	1,857,000
Grain							
Oats	2016	224	0.58	130	tons	241.00	31,000
	2015	900	0.58	520	tons	240.23	125,000
Wheat	2016	6,934	1.40	9,700	tons	278.47	2,701,000
	2015	15,298	2.09	32,000	tons	431.44	13,806,000
Hay							
Alfalfa	2016	49,395	8.26	408,000	tons	167.32	68,267,000
	2015	54,918	8.42	462,000	tons	176.97	81,760,000
Bermuda Grass	2016	2,211	8.40	18,600	tons	190.00	3,534,000
	2015	2,493	8.40	20,900	tons	190.00	3,971,000
Klein Grass	2016	1,172	9.20	10,800	tons	199.00	2,149,000
	2015	1,415	9.25	13,100	tons	200.00	2,620,000
Oats	2016	371	2.00	740	tons	195.00	144,000
	2015	1,816	2.00	3,630	tons	200.00	726,000
Sudan	2016	705	5.75	4,100	tons	195.10	800,000
	2015	1,457	5.96	8,700	tons	197.49	1,718,000
Miscellaneous*	2016	1,878	9.60	18,030	tons	46.09	831,000
	2015	307	2.30	710		386.96	275,000

\* Includes: Silage - Barley, Triticales.



# FIELD AND SEED CROPS

	Year	Harvested Acreage	Production		Unit	Value	
			Per Acre	Total		Per Unit	Total
<b>Pasture-Irrigated</b>	<b>2016</b>	<b>2,500</b>			<b>acres</b>	<b>140.00</b>	<b>350,000</b>
	2015	2,490			acres	137.47	342,000
<b>Rangeland</b>	<b>2016</b>	<b>15,000</b>			<b>acres</b>	<b>2.00</b>	<b>30,000</b>
	2015	15,000			acres	2.00	30,000
<b>Silage and Green Chop</b>							
<b>Alfalfa</b>	<b>2016</b>	<b>2,969</b>	<b>6.12</b>	<b>18,200</b>	<b>tons</b>	<b>80.04</b>	<b>1,457,000</b>
	2015	1,791	14.25	25,500	tons	57.19	1,458,000
<b>Corn</b>	<b>2016</b>	<b>1,921</b>	<b>30.35</b>	<b>58,300</b>	<b>tons</b>	<b>47.98</b>	<b>2,797,000</b>
	2015	1,302	33.94	44,200	tons	45.58	2,015,000
<b>Oats</b>	<b>2016</b>	<b>300</b>	<b>5.30</b>	<b>1,590</b>	<b>tons</b>	<b>70.00</b>	<b>111,000</b>
	2015	1,494	7.10	10,610	tons	52.50	557,000
<b>Sorghum</b>	<b>2016</b>	<b>300</b>	<b>5.30</b>	<b>1,600</b>	<b>tons</b>	<b>70.00</b>	<b>112,000</b>
	2015	958	15.00	14,400	tons	52.93	762,000
<b>Rye Grass</b>	<b>2016</b>	<b>1,546</b>	<b>8.00</b>	<b>12,400</b>	<b>tons</b>	<b>57.00</b>	<b>707,000</b>
	2015	1,881	8.00	15,000	tons	57.00	855,000
<b>Triticale</b>	<b>2016</b>				<b>Miscellaneous</b>		
	2015	1,361	2.85	3,880	tons	185.00	718,000
<b>Wheat</b>	<b>2016</b>	<b>11,125</b>	<b>8.00</b>	<b>89,000</b>	<b>tons</b>	<b>50.00</b>	<b>4,450,000</b>
	2015	5,200	8.00	41,600	tons	50.00	2,080,000
<b>TOTAL</b>	<b>2016</b>	<b>102,829</b>					<b>97,184,000</b>
	2015	114,492					122,794,000

\* Includes: Grain - Barley, Hay - Teff Grass, Safflower.



## LIVESTOCK AND POULTRY

	Number Year	Total of Head	Liveweight	Value		Total
				Per Unit	Unit	
Cattle and Calves	2016	21,900	142,400	cwt	129.00	18,370,000
	2015	22,995	134,400	cwt	141.01	18,952,000
Sheep and Lambs	2016	8,300	9,960	cwt	138.00	1,374,000
	2015	8,430	10,951	cwt	145.41	1,592,000
Other*	2016			various		1,167,000
	2015			various		1,122,000
TOTAL	2016					20,911,000
	2015					21,666,000

\* Includes Baby Chicks, Chickens, Ducks, Pheasants.

## LIVESTOCK AND POULTRY PRODUCTS

	Year	Production	Unit	Value		Total
					Unit	
Eggs	2016	47,034,000	dozen	1.15		54,089,000
	2015	49,250,000	dozen	1.45		71,413,000
Milk*	2016	8,735,000	cwt	17.06		149,019,000
	2015	9,194,000	cwt	17.96		165,124,000
Other Products**	2016					1,739,000
	2015					1,812,000
TOTAL	2016					204,847,000
	2015					238,349,000

\*Information Supplied by: California Agricultural Statistics Service. Includes Fresh Market and Manufactured.

\*\*Includes Wool, Manure.

## AQUACULTURE

Year	Production	Unit	Value		
			Per Unit	Total	
Catfish	2016	215,000	lbs	2.50	538,000
	2015	288,000	lbs	2.50	720,000
Miscellaneous*	2016		various		580,000
	2015		various		717,200
Tilapia	2016	1,275,000	lbs	2.75	3,506,000
	2015	1,440,000	lbs	2.75	3,960,000
Total	2016				4,624,000
	2015				5,397,000

\* Includes Goldfish, Koi, Tropical Fish, Bass.



## NURSERY STOCK PRODUCTION

	Year	Acres	Value		Total
			Units	Per Unit	
<b>Ornamental Nursery Stock</b>	<b>2016</b>	<b>3,592</b>	<b>34,872,000</b>	<b>various</b>	<b>122,346,000</b>
	2015	4,601	51,136,000	various	137,707,000
<b>Cut Flowers / Cut Greens</b>	<b>2016</b>	<b>117</b>	<b>374,000</b>	<b>cuttings</b>	<b>374,000</b>
	2015	132	2,038,000	cuttings	1,706,000
<b>Christmas Trees (cut)</b>	<b>2016</b>	<b>15</b>	<b>820</b>	<b>each</b>	<b>55,000</b>
	2015	70	3,850	each	226,000
<b>Turf</b>	<b>2016</b>	<b>1,818</b>	<b>79,192,000</b>	<b>square feet</b>	<b>22,939,000</b>
	2015	1,516	66,037,000	square feet	15,596,000
<b>Farm Planting Stock</b>	<b>2016</b>	<b>153</b>	<b>100,495</b>	<b>various</b>	<b>4,712,000</b>
	2015	74	135,000	various	3,413,000
<b>TOTAL</b>	<b>2016</b>	<b>5,695</b>			<b>150,426,000</b>
	2015	6,393			158,648,000



## APICULTURE

	Year	Production	Value		Total
			Per Unit	Unit	
<b>Honey</b>	<b>2016</b>	<b>735,000</b>	<b>lbs</b>	<b>1.90</b>	<b>1,397,000</b>
	2015	720,000	lbs	1.92	1,382,000
<b>Beeswax</b>	<b>2016</b>	<b>14,000</b>	<b>lbs</b>	<b>2.70</b>	<b>37,800</b>
	2015	13,500	lbs	2.58	34,800
<b>Fees Collected for Pollination</b>	<b>2016</b>	<b>25,500</b>	<b>colonies</b>	<b>143.00</b>	<b>3,647,000</b>
	2015	24,000	colonies	145.00	3,480,000
<b>Total Colonies</b>	<b>2016</b>	<b>37,500</b>			
	2015	33,750			
<b>TOTAL</b>	<b>2016</b>				<b>5,082,000</b>
	2015				4,897,000

## DISTRICT VALUATIONS - AGRICULTURAL CROPS

District	2012	2013	2014	2015	2016
Riverside/Corona	111,308,000	110,078,000	96,205,000	94,139,000	91,835,000
San Jacinto/Temecula Valley	157,747,000	165,035,000	175,767,000	151,976,000	146,500,000
Coachella Valley	543,658,000	615,621,000	625,602,000	649,732,000	639,620,000
Palo Verde Valley	155,320,000	167,701,000	171,013,000	146,197,000	124,708,000
<b>Total Crop Valuation</b>	<b>968,033,000</b>	<b>1,058,435,000</b>	<b>1,068,587,000</b>	<b>1,042,044,000</b>	<b>1,002,663,000</b>

## ACREAGE STATISTICS

Crop	2012	2013	2014	2015	2016
Citrus	17,498	15,729	16,384	16,462	15,802
Tree and Vine	26,662	26,826	26,259	23,269	22,784
Vegetable, Melons, Misc.	40,808	41,939	38,204	37,165	46,934
Field and Seed	131,160	127,914	115,727	114,492	102,829
Nursery	6,661	7,701	7,676	6,393	5,695
<b>Total Planted Acreage</b>	<b>222,789</b>	<b>220,109</b>	<b>204,250</b>	<b>197,781</b>	<b>194,044</b>

## TOTAL VALUATION

Crop	2012	2013	2014	2015	2016
Citrus	125,711,000	142,404,000	170,891,000	187,673,000	200,101,000
Tree and Vine	217,214,000	232,536,000	223,593,000	234,928,000	227,444,000
Vegetable, Melons, Misc.	286,234,000	340,407,000	337,404,000	327,199,000	365,157,000
Field and Seed	147,352,000	154,582,000	156,575,000	122,794,000	97,184,000
Nursery	190,878,000	191,215,000	172,910,000	158,648,000	150,426,000
Apiculture	4,983,000	4,715,000	4,819,000	4,897,000	5,082,000
Aquaculture	4,205,000	2,262,000	5,078,000	5,397,000	4,624,000
<b>Total Crop</b>	<b>976,577,000</b>	<b>1,068,121,000</b>	<b>1,071,270,000</b>	<b>1,041,536,000</b>	<b>1,050,018,000</b>
Livestock and Poultry	276,553,000	259,683,000	290,746,000	260,015,000	225,758,000
<b>GRAND TOTAL</b>	<b>1,253,130,000</b>	<b>1,327,804,000</b>	<b>1,362,016,000</b>	<b>1,301,551,000</b>	<b>1,275,776,000</b>



## CALIFORNIA'S LEADING AGRICULTURAL COUNTIES BY TOTAL VALUE OF PRODUCTION

<u>2014</u>			<u>2015</u>		
<u>Rank</u>	<u>County</u>	<u>Value (\$)</u>	<u>Rank</u>	<u>County</u>	<u>Value (\$)</u>
1	Tulare	8,084,478,000	1	Tulare	6,980,772,000
2	Kern	7,552,160,000	2	Kern	6,878,664,000
3	Fresno	7,037,175,000	3	Fresno	6,605,943,000
4	Monterey	4,493,427,000	4	Monterey	4,841,519,000
5	Merced	4,429,987,000	5	Stanislaus	3,879,333,000
6	Stanislaus	4,397,286,000	6	Merced	3,589,900,000
7	San Joaquin	3,234,705,000	7	San Joaquin	2,732,900,000
8	Kings	2,471,746,000	8	Ventura	2,198,555,000
9	Madera	2,265,641,000	9	Kings	2,021,052,000
10	Ventura	2,133,589,000	10	Madera	2,016,726,000
11	Imperial	1,858,816,000	11	Imperial	1,925,137,000
12	San Diego	1,817,449,000	12	San Diego	1,701,762,000
13	Santa Barbara	1,489,979,000	13	Santa Barbara	1,479,093,000
14	Riverside	1,362,016,000	14	Riverside	1,301,552,000

## RIVERSIDE COUNTY AGRICULTURAL PRODUCTION VALUES 2007 - 2016

<u>YEAR</u>	<u>VALUE</u>	<u>STATE RANK</u>
2007	\$1,265,063,000	12
2008	\$1,268,590,000	12
2009	\$1,015,755,000	12
2010	\$1,093,646,000	13
2011	\$1,282,256,000	13
2012	\$1,253,130,000	14
2013	\$1,327,804,000	13
2014	\$1,362,016,000	14
2015	\$1,301,551,000	14
2016	\$1,275,776,000	14



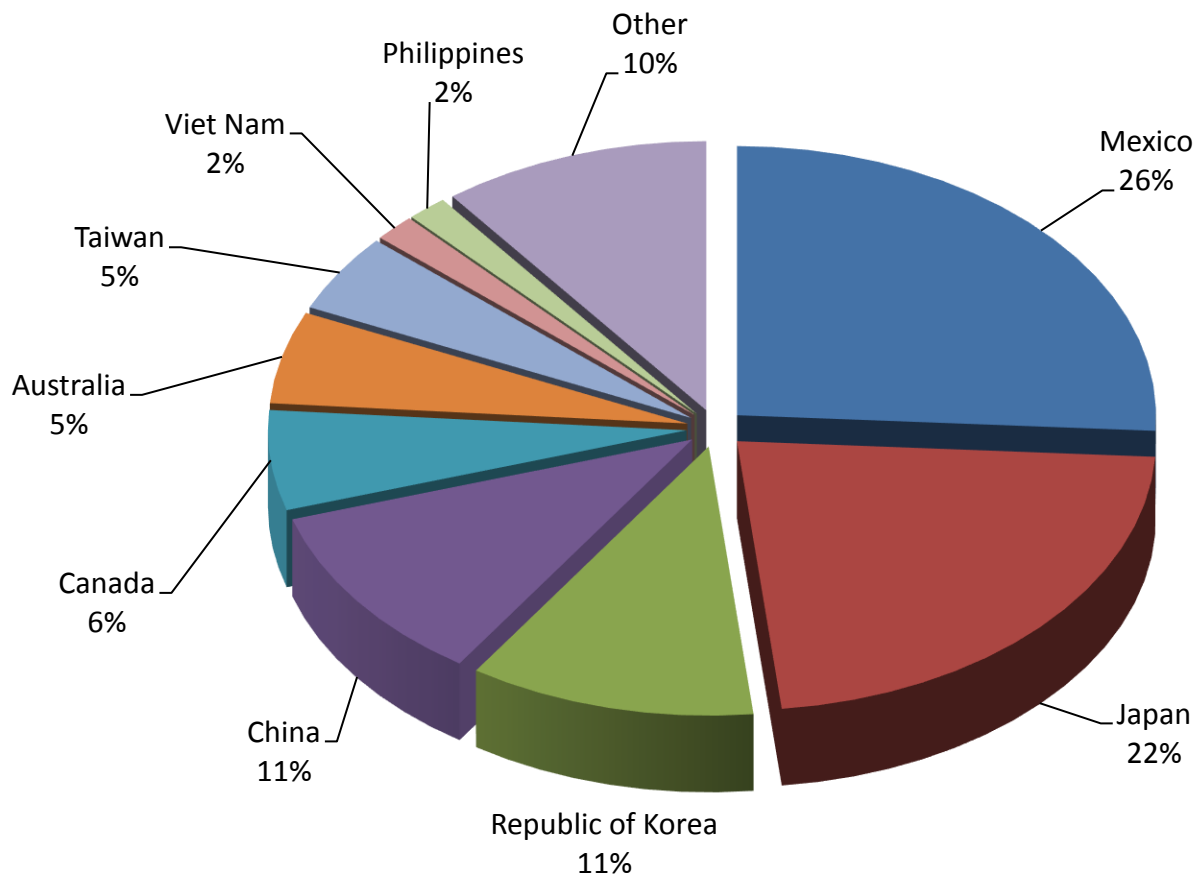


# PHYTOSANITARY EXPORT CERTIFICATION - 2016

## All Export Countries

Australia	Ecuador	Japan	Qatar
Bangladesh	El Salvador	Korea	Saudi Arabia
Belize	France	Lebanon	Singapore
Botswana	French Polynesia	Malaysia	South Africa
Brazil	Gambia	Maldives	Spain
Canada	Germany	Mexico	Sri Lanka
Cayman Islands	Ghana	Morocco	Switzerland
Chile	Guatemala	Myanmar	Taiwan
China	Honduras	Netherlands	Thailand
Colombia	Hong Kong	New Zealand	Trinidad and Tobago
Costa Rica	Indonesia	Nigeria	Turkey
Denmark	Israel	Panama	Uganda
Dominica	Jamaica	Philippines	United Arab Emirates
Dominican Republic			Viet Nam

## Top Ten Export Countries



Note: This list only represents countries that specifically require "pest cleanliness" certification services.

# PHYTOSANITARY EXPORT CERTIFICATION - 2015

## All Export Commodities

Alfalfa	Corn	Limes	Rosemary
Apples	Cotton	Mandarin/Tangerines	Sage
Artichokes	Date Palms	Mangoes	Savory
Avocados	Dates	Mint	Sudan Grass
Basil	Dill	Oranges	Sunflowers
Bell Peppers	Douglas Fir	Oregano	Tangelos
Bermuda Grass	Grapes	Ornamental Nursery Stock	Tarragon
Broccoli	Grapefruit	Peppers	Thyme
Cauliflower	Kale	Pomegranates	Tomatoes
Celery	Klein Grass	Potatoes	Walnuts
Cherries	Lemons	Pumpkins	Watermelons
Chives	Lettuce	Raisins	White Fir
Cilantro			Wood Products

Note: This list only represents commodities exported to countries that specifically require "pest cleanliness" certification services.



## PEST INTERCEPTIONS - 2016

<u>Scientific Name</u>	<u>Common Name</u>	<u>Pest Rating</u>	<u>Interceptions</u>
<i>Aspidiotus destructor</i>	Coconut Scale	A	1
<i>Ceroplastes floridensis</i>	Florida Wax Scale	A	1
<i>Parmarion martinsi</i>	Semi Slug	A	1
<i>Thyridopteryx ephemeraeformis</i>	Bagworm	A	1
<i>Planococcus lilacinus</i>	Mealybug	A	1
<i>Aonideilla aurantii</i>	California Red Scale	B	1
<i>Bradybaena similaris</i>	Asian Tramp Snail	B	1
<i>Colletotrichum theobromicos</i>	Leaf and Fruit Spot	B	1
<i>Bemisia tabaci</i>	Sweet Potato Whitefly	C	1
<i>Dysmicoccus neobrevipes</i>	Grey Pineapple Mealybug	C	3
<i>Hemiberlesia lantaniae</i>	Lantana Scale	C	1
<i>Aspidiotus nerii</i>	Oleander Scale	C	1
<i>Pratylenchus sp.</i>	Lesion Nematode	D	1
<i>Aleurodothrips fasciapennis</i>	Whitefly Thrips	D	1
<i>Coccidae</i>	Scale	Q	1
<i>Zachrysia provisoria</i>	Snail	Q	1





## PEST INTERCEPTIONS - 2016

### **Pest Rating Designations**

"A" is an organism of known economic importance subject to state (or County Agricultural Commissioner) enforcement action.

"B" is an organism of known economic importance subject to enforcement action at the discretion of the County Agricultural Commissioner.

"Q" is an organism suspected to be of economic importance but its status is uncertain because of incomplete or inadequate information.



## PEST INTERCEPTION SUMMARY 2012 - 2016

<b><u>Year</u></b>	<b><u>Total</u></b>	<b><u>A</u></b>	<b><u>B</u></b>	<b><u>Q</u></b>
2016	10	5	3	2
2015	61	45	6	10
2014	58	37	10	11
2013	38	19	8	11
2012	84	24	16	44

# SUSTAINABLE AGRICULTURE - 2016

## ORGANIC FARMING

202 Organic producers registered in Riverside County

### PEST DETECTION (Commercial and Urban)

<u>Activity</u>	<u>Hours</u>
Commercial Crops	24
Public Contact	148
Special Surveys:	

Red Imported Fire Ant	0
Other	96

Citrus Tristeza Indexing (Coachella Valley) Commercial	<u>Numbers</u>
---	----------------

Properties tested	2
Acres Sampled	52
Samples tested biochemically	190
"Positive" samples	0

### PEST DETECTION (Exotic Insects)

<u>Pest</u>	<u>Trap Servicing</u>
European Grape Vine Moth	7,026
Light Brown Apple Moth	0
European Corn Borer	188
Pink Hibiscus Mealybug	0
Khapra Beetle	302
Gypsy Moth	48

### Pest Exclusion (Incoming plant shipments)

<u>Units Profiled</u>	<u>Units inspected</u>	<u>Rejections</u>
2,311	1,577	21

### PEST ABATEMENT / HOLD NOTICES

<u>Pest</u>	<u>Properties</u>
California Red Scale	13
Asian Citrus Psyllid	0
Sting Nematode	0
Citrus Tristeza Virus	0
Glassy-Winged Sharpshooter	0
Giant Palm Borer	0

## BIOLOGICAL CONTROL OF WEEDS

<u>Pest</u>	<u>Control Agent</u>
Yellow Starthistle	<i>Bangasternus orientalis</i> (weevil)
	<i>Eustenopus Villosus</i> (weevil)
Puncture Vine	<i>Microlarinus lareynii</i> (weevil)
	<i>Microlarinus lypriformis</i> (weevil)

## BIOLOGICAL CONTROL OF INSECTS AND SNAILS

<u>Pest</u>	<u>Control Agent</u>
Ash Whitefly	<i>Eucaris arthenopea</i> (wasp)
Black Scale	<i>Metaphycus helvolus</i> (wasp)
Brown Soft Scale	<i>Metaphycus luteolus</i> (wasp)
California Red Scale	<i>Aphytis melinus</i> (wasp)
Citrus Mealybug	<i>Cryptolaemus montrouzieri</i> (beetle)
Cottony Cushion	<i>Encarsia sp.</i> (wasp)
Scale	<i>Cryptochaetum iceyae</i> (fly)
Eucalyptus	<i>Aventianella longoi</i> (wasp)
Long-horned Borer	<i>Jarra phoracantha</i> (wasp)
	<i>Syngaster lepidus</i> (wasp)
Mosquitoes	<i>Bacillus thur. iraelensis</i> (baterium)
	<i>Gamusia affinis</i> (fish)
Olive Fruit Fly	<i>Psytalia concolor</i> (wasp)
Persea Mite	<i>Galendromus annectens</i> (mite)
	<i>Galenromus helveolus</i> (mite)
	<i>Galendromus pilosus</i> (mite)
Red Gum Lerp Psyllid	<i>Plyllaephagus bliteus</i> (wasp)
Pink Hibiscus Mealybug	<i>Anagyrus Kamali</i>
	<i>Gyranusoidea indica</i>
Ant	<i>Pseudacteon tricuspis</i> (fly)
Two Spotted	<i>Phytoseiulus persimilis</i> (mite)
Spider Mite	<i>Galendromus occidentalis</i> (mite)
Vine Mealybug	<i>Cryptolaemus montrouzieri</i> (beetle)
Western Grapeleaf	<i>Ametadoria harrisinae</i> (parasitoid)
Skeletonizer	<i>Apanteles harrisinae</i> (wasp)
Wooly Whitefly	<i>Amitus spiniferus</i> (parasitoid)
	<i>Cales noacki</i> (parasitoid)
Brown Garden	<i>Rumina decollate</i> (snail)
Snail	

## OTHER

Enforcement of County Ordinances to control Lettuce Mosaic Virus, Agricultural Grading, Land Application of Manure and Biosolids, Cotton Plowdown, Blowing Dust, and Beekeeping.

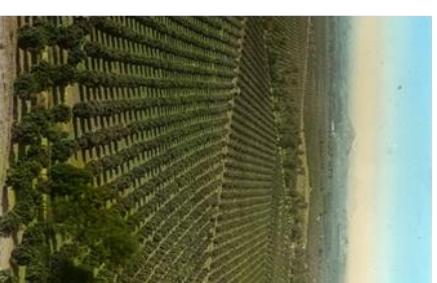
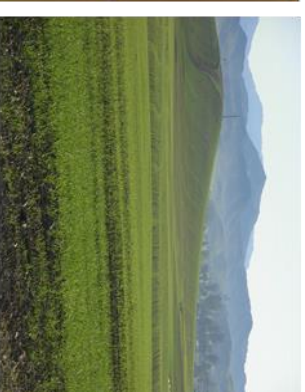
# Notes



Riverside County  
Agricultural Commissioner's Office  
P.O. Box 1089  
Riverside, CA 92502-1089



# RIVERSIDE COUNTY AGRICULTURE



GROWING FOR OUR FUTURE